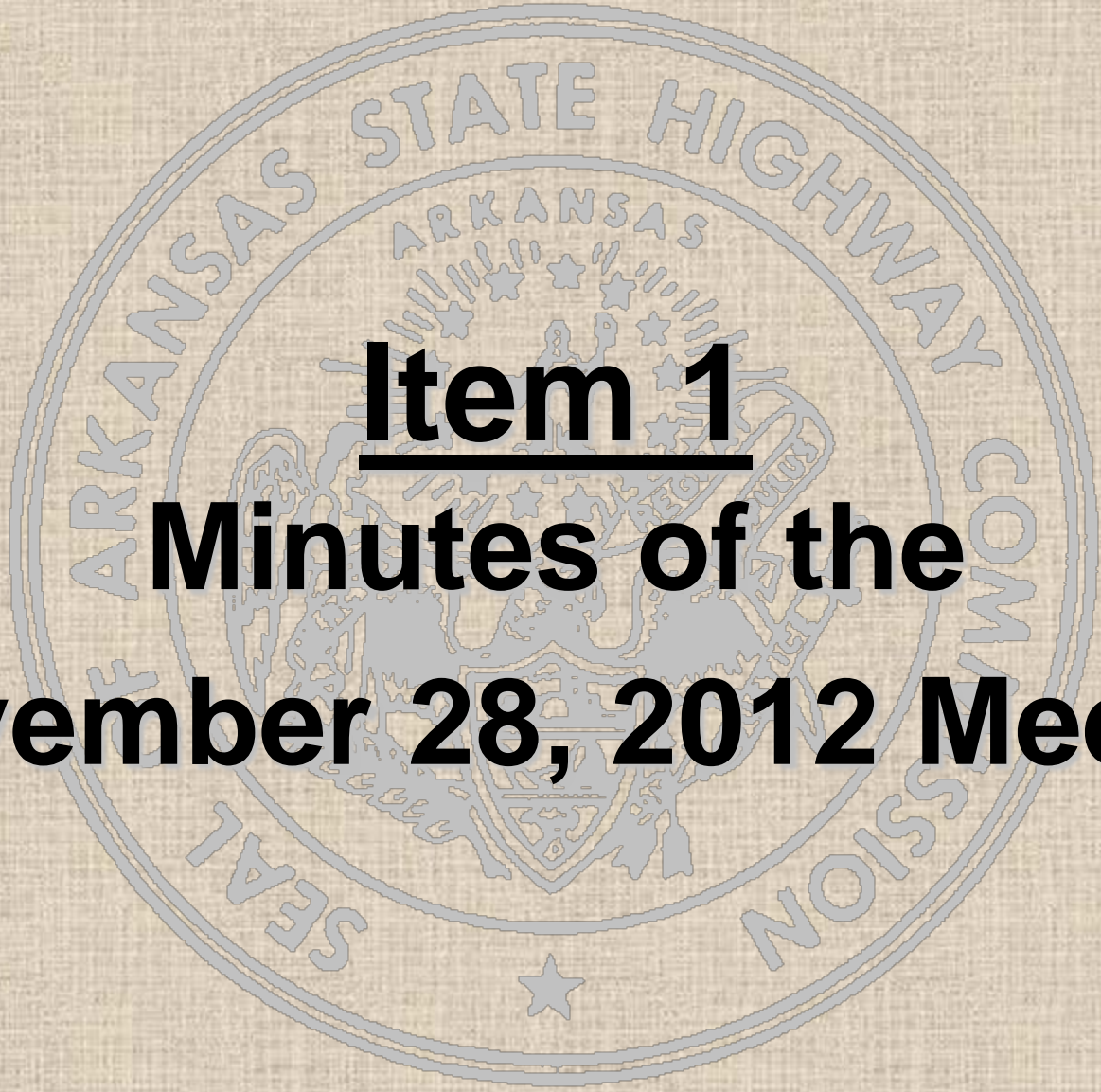


The seal of the Arkansas State Highway Commission is a circular emblem. It features a central shield with a plow, a sheaf of wheat, and a cotton plant. Above the shield is a banner with the word 'COMMERCE'. The shield is surrounded by a wreath. The outer ring of the seal contains the text 'ARKANSAS STATE HIGHWAY COMMISSION' at the top and 'SEAL' at the bottom. A single star is positioned at the bottom center of the seal.

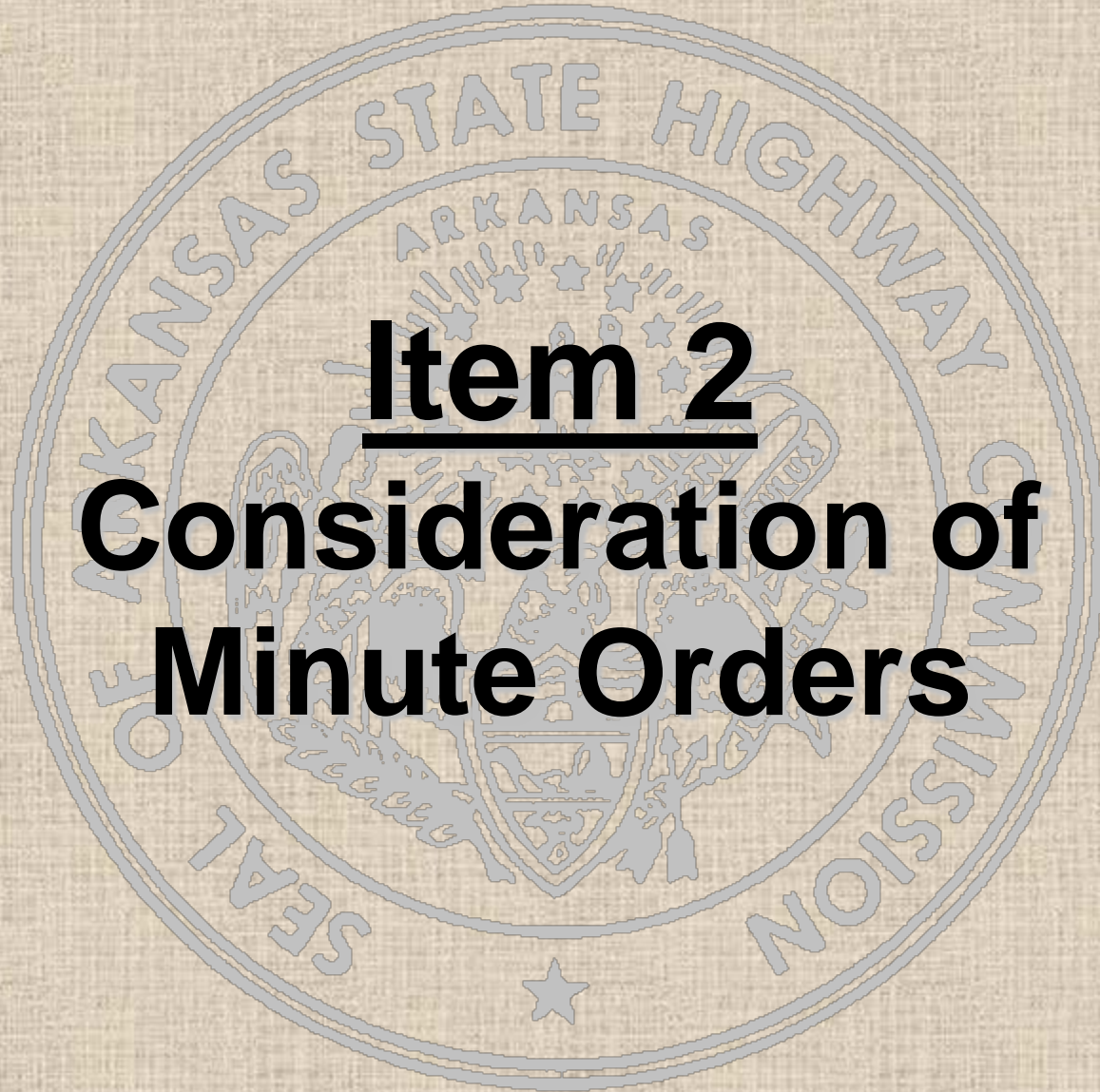
**Arkansas State Highway
Commission Meeting
January 9, 2013**



Item 1

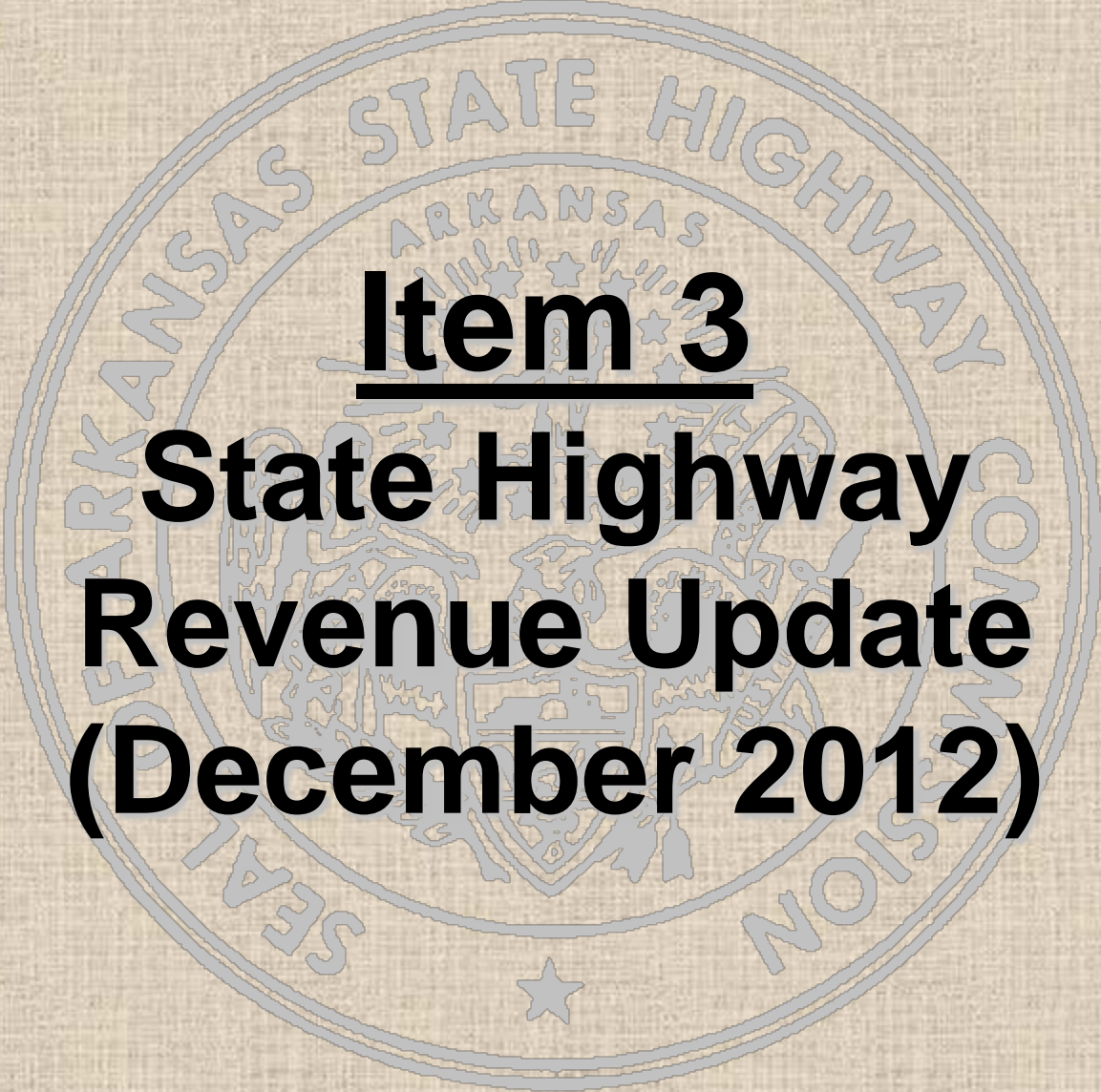
Minutes of the

November 28, 2012 Meeting



Item 2

Consideration of Minute Orders

The background features a large, faint, circular seal of the Arkansas State Highway Commission. The seal contains the text "ARKANSAS STATE HIGHWAY COMMISSION" around the perimeter and a central emblem with a star and the word "ARKANSAS".

Item 3
**State Highway
Revenue Update
(December 2012)**

REVENUES

Comparison of AHTD State Revenues by Fiscal Year

	FY 2012	FY 2013	Variance	Percent
July - December	(Millions)	(Millions)	(Millions)	Change
Motor Fuel Taxes	\$145.8	\$140.2	(\$5.6)	-3.8%
Registration Fees	\$39.2	\$37.9	(\$1.3)	-3.3%
Permits & Penalties	\$10.1	\$9.4	(\$0.7)	-6.9%
Other	\$2.7	\$4.3	\$1.6	59.3%
Total User Revenues	\$197.8	\$191.8	(\$6.0)	-3.0%
Natural Gas Severance Tax	\$19.8	\$12.7	(\$7.1)	-35.9%
RRA Interest	\$1.5	\$1.5	\$0.0	0.0%
Less: Diesel Tax for Bonds	(\$8.5)	(\$8.4)	\$0.1	-1.2%
Total Revenues Available	\$210.6	\$197.6	(\$13.0)	-6.2%

Fiscal Year 2012 Budget vs. Actual

	Budget	Actual	Variance	Percent
July - December	(Millions)	(Millions)	(Millions)	Variance
Motor Fuel Taxes	\$141.6	\$140.2	(\$1.4)	-1.0%
Registration Fees	\$36.3	\$37.9	\$1.6	4.4%
Permits & Penalties	\$10.0	\$9.4	(\$0.6)	-6.0%
Other	\$2.9	\$4.3	\$1.4	48.3%
Total User Revenues	\$190.8	\$191.8	\$1.0	0.5%
Natural Gas Severance Tax	\$12.4	\$12.7	\$0.3	2.4%
RRA Interest	\$1.2	\$1.5	\$0.3	25.0%
Less: Diesel Tax for Bonds	(\$8.6)	(\$8.4)	\$0.2	-2.3%
Total Revenues Available	\$195.8	\$197.6	\$1.8	0.9%

CONSUMPTION

Taxable Motor Fuel Gallons Reported

	FY 2012	FY 2013	Difference	Percent
July - December	(Millions)	(Millions)	(Millions)	Change
Gasoline	714.4	711.1	-3.3	-0.5%
Diesel	311.0	309.2	-1.8	-0.6%
Total	1,025.4	1,020.3	-5.1	-0.5%

DECEMBER 2012 REPORT

REVENUES															
Month/Calendar Year	MOTOR FUELS TAX			REGISTRATION FEES			PERMITS & PENALTIES			OTHER			TOTAL		
	PREVIOUS	CURRENT	PERCENT	PREVIOUS	CURRENT	PERCENT	PREVIOUS	CURRENT	PERCENT	PREVIOUS	CURRENT	PERCENT	PREVIOUS	CURRENT	PERCENT
	12 MONTHS	12 MONTHS	CHANGE	12 MONTHS	12 MONTHS	CHANGE	12 MONTHS	12 MONTHS	CHANGE	12 MONTHS	12 MONTHS	CHANGE	12 MONTHS	12 MONTHS	CHANGE
JANUARY 11/12	\$24,431,457	\$24,266,783	-0.67%	\$8,526,346	\$8,722,665	2.30%	\$1,548,229	\$1,605,325	3.69%	\$408,938	\$377,475	-7.69%	\$34,914,971	\$34,972,247	0.16%
FEBRUARY 11/12	\$22,324,461	\$22,321,602	-0.01%	\$5,270,709	\$5,854,955	11.08%	\$1,248,888	\$1,658,285	32.78%	\$843,945	\$371,675	-55.96%	\$29,688,004	\$30,206,516	1.75%
MARCH 11/12	\$20,393,825	\$22,370,968	9.69%	\$8,436,305	\$7,481,134	-11.32%	\$1,646,367	\$1,566,866	-4.83%	\$523,378	\$500,664	-4.34%	\$30,999,876	\$31,919,632	2.97%
APRIL 11/12	\$24,608,839	\$23,289,847	-5.36%	\$7,120,204	\$8,285,764	16.37%	\$1,579,088	\$1,681,037	6.46%	\$570,307	\$511,567	-10.30%	\$33,878,438	\$33,768,215	-0.33%
MAY 11/12	\$23,456,906	\$24,538,605	4.61%	\$7,989,749	\$8,143,718	1.93%	\$1,585,188	\$1,662,951	4.91%	\$665,598	\$478,804	-28.06%	\$33,697,441	\$34,824,078	3.34%
JUNE 11/12	\$23,736,449	\$25,015,363	5.39%	\$7,283,786	\$7,324,683	0.56%	\$1,843,490	\$1,646,890	-10.66%	\$837,473	\$412,345	-50.76%	\$33,701,198	\$34,399,280	2.07%
JULY 11/12	\$25,085,780	\$21,947,043	-12.51%	\$8,262,243	\$8,496,745	2.84%	\$1,678,886	\$1,600,115	-4.69%	\$12,262	\$498,412	3964.68%	\$35,039,171	\$32,542,314	-7.13%
AUGUST 11/12	\$24,629,881	\$23,941,300	-2.80%	\$7,085,386	\$7,418,954	4.71%	\$1,686,956	\$1,712,521	1.52%	\$1,413,092	\$947,786	-32.93%	\$34,815,316	\$34,020,562	-2.28%
SEPTEMBER 11/12	\$24,545,170	\$24,669,539	0.51%	\$6,260,146	\$5,275,543	-15.73%	\$1,732,180	\$1,480,497	-14.53%	\$6,551	\$451,407	6790.46%	\$32,544,047	\$31,876,986	-2.05%
OCTOBER 11/12	\$24,315,710	\$23,119,934	-4.92%	\$6,023,356	\$6,204,378	3.01%	\$1,677,404	\$1,615,060	-3.72%	\$461,006	\$821,033	78.10%	\$32,477,476	\$31,760,404	-2.21%
NOVEMBER 11/12	\$22,850,765	\$24,323,943	6.45%	\$5,792,504	\$5,140,144	-11.26%	\$1,751,147	\$1,604,735	-8.36%	\$442,440	\$559,767	26.52%	\$30,836,856	\$31,628,590	2.57%
DECEMBER 11/12	\$24,417,610	\$22,328,691	-8.55%	\$5,712,765	\$5,419,922	-5.13%	\$1,529,614	\$1,375,019	-10.11%	\$402,195	\$973,477	142.04%	\$32,062,185	\$30,097,108	-6.13%
TOTALS	\$284,796,855	\$282,133,618	-0.94%	\$83,763,498	\$83,768,604	0.01%	\$19,507,439	\$19,209,300	-1.53%	\$6,587,186	\$6,904,410	4.82%	\$394,654,978	\$392,015,933	-0.67%

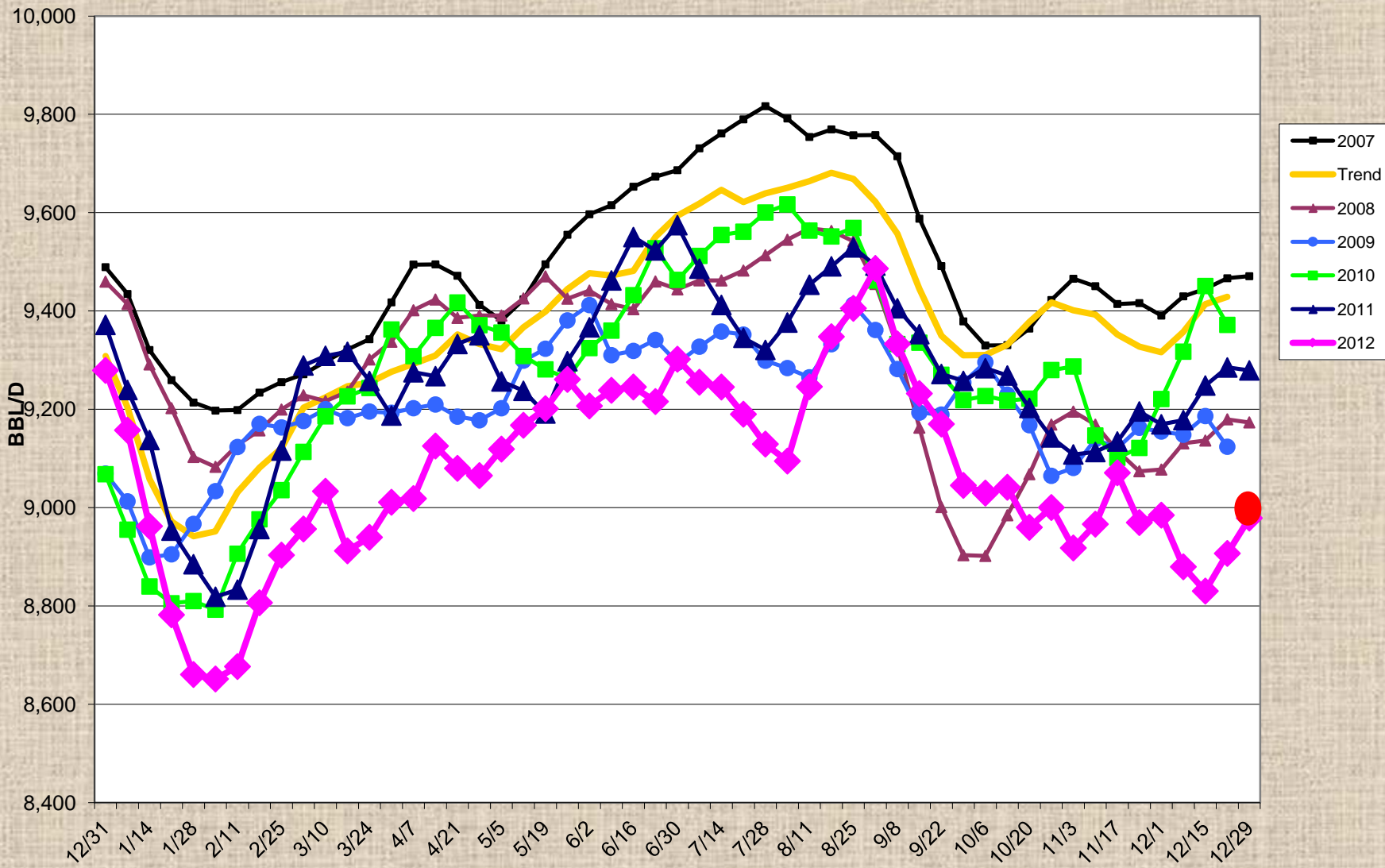
Totals may vary due to rounding of cents.

* Other - Primarily search fees from insurance companies for driver background checks. Excludes Interest.

CONSUMPTION

Month/Calendar Year	GASOLINE			DIESEL			LPG/CNG			TOTAL		
	PREVIOUS	CURRENT	PERCENT	PREVIOUS	CURRENT	PERCENT	PREVIOUS	CURRENT	PERCENT	PREVIOUS	CURRENT	PERCENT
	12 MONTHS	12 MONTHS	CHANGE	12 MONTHS	12 MONTHS	CHANGE	12 MONTHS	12 MONTHS	CHANGE	12 MONTHS	12 MONTHS	CHANGE
JANUARY 11/12	122,877,790	120,690,554	-1.78%	53,453,752	51,533,091	-3.59%	19,774	43,968	122.35%	176,351,316	172,267,613	-2.32%
FEBRUARY 11/12	108,121,623	109,763,857	1.52%	44,042,292	45,174,671	2.57%	19,028	45,387	138.53%	152,182,943	154,983,915	1.84%
MARCH 11/12	99,477,993	110,477,715	11.06%	47,359,505	51,746,075	9.26%	15,571	46,215	196.80%	146,853,069	162,270,005	10.50%
APRIL 11/12	119,995,824	120,003,350	0.01%	55,317,558	54,342,790	-1.76%	17,992	48,184	167.81%	175,331,374	174,394,324	-0.53%
MAY 11/12	114,401,867	116,156,055	1.53%	44,694,650	44,147,799	-1.22%	15,287	56,050	266.65%	159,111,804	160,359,904	0.78%
JUNE 11/12	119,723,100	124,556,221	4.04%	51,311,892	56,257,147	9.64%	20,046	55,187	175.30%	171,055,038	180,868,555	5.74%
JULY 11/12	122,759,115	120,110,682	-2.16%	56,338,678	54,077,384	-4.01%	20,477	57,100	178.85%	179,118,270	174,245,166	-2.72%
AUGUST 11/12	118,867,914	121,289,757	2.04%	44,090,315	44,521,957	0.98%	38,920	58,850	51.21%	162,997,149	165,870,564	1.76%
SEPTEMBER 11/12	122,751,105	122,230,905	-0.42%	52,465,116	57,312,738	9.24%	34,287	59,463	73.43%	175,250,508	179,603,106	2.48%
OCTOBER 11/12	115,945,026	112,335,707	-3.11%	53,897,154	52,522,722	-2.55%	31,416	54,226	72.61%	169,873,596	164,912,655	-2.92%
NOVEMBER 11/12	118,686,534	120,143,681	1.23%	50,835,948	47,835,191	-5.90%	35,783	42,476	18.70%	169,558,265	168,021,348	-0.91%
DECEMBER 11/12	115,279,491	115,119,698	-0.14%	53,389,057	53,031,586	-0.67%	39,417	71,627	81.72%	168,707,965	168,222,911	-0.29%
TOTALS	1,398,887,382	1,412,878,182	1.00%	607,195,917	612,503,151	0.87%	307,998	638,733	107.38%	2,006,391,297	2,026,020,066	0.98%

Smoothed Implied Gasoline Demand (Avg)



The background of the slide features a large, faint, circular seal of the Arkansas State Highway Commission. The seal contains the text "ARKANSAS STATE HIGHWAY COMMISSION" around the perimeter and "SEAL" at the bottom. In the center of the seal is the state seal of Arkansas, which includes a plow, a sheaf of wheat, and a cotton plant, with the word "AGRICULTURE" above and "COMMERCE" below. The word "ARKANSAS" is written in an arc above the central emblem.

Item 4

Status of Federal Highway and Transit Issues



Federal Transportation Legislation

- Continuing Resolution
 - Signed by the President September 28, 2012
 - Appropriates Funding for 6 months
 - Expires March 27, 2013



Highway Trust Fund (HTF)

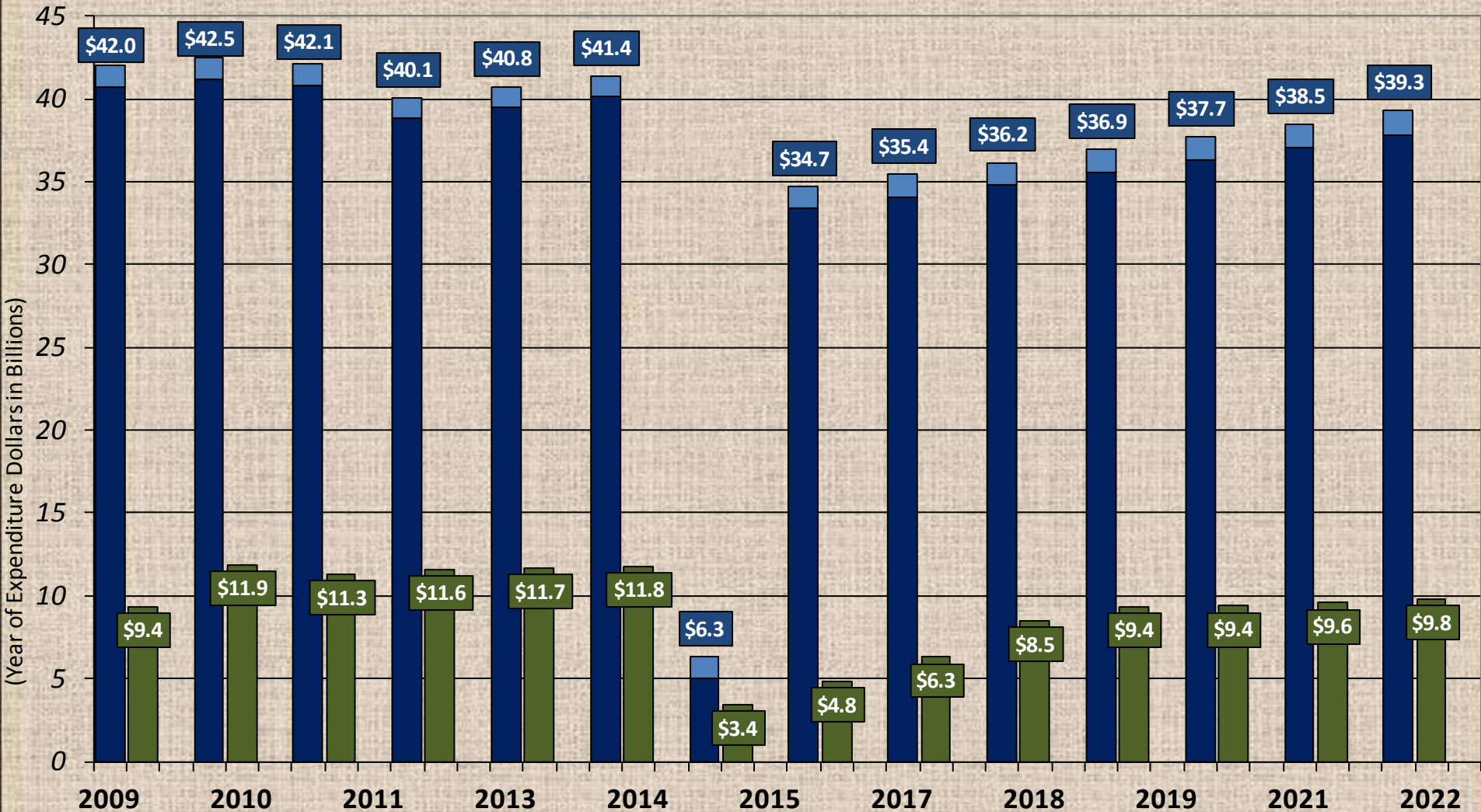
- Sequestration

- MAP-21 transfers \$18.8 billion from the General Fund to the HTF
- First Transfer Reduced \$471 Million
- HTF Insolvent in 2015
- Expedited Insolvency

Federal Highway and Transit Needs and Obligations Through 2022

Assumes a minimum balance of \$2 billion for the Highway Account and \$.25 billion for the Mass Transit Account

■ Federal-aid Highway Obligations ■ Highway Safety Obligations ■ Total Transit Obligations



The background of the slide features a large, faint, circular seal of the Arkansas State Highway and Transportation Department. The seal contains the text "ARKANSAS STATE HIGHWAY AND TRANSPORTATION DEPARTMENT" around the perimeter and "SEAL OF THE DEPARTMENT" at the bottom. In the center of the seal is a shield with various symbols, including a plow, a sheaf of wheat, and a star.

Item 5

Consultant Selection for On-Call Highway Noise Analysis and Abatement Services

The background features a large, faint, circular seal of the Arkansas State Highway and Transportation Department. The seal contains the text "ARKANSAS STATE HIGHWAY" at the top and "TRANSPORTATION" at the bottom. In the center, it says "ARKANSAS" above a crest with three stars. The seal is rendered in a light blue-grey color.

Item 6

Consultant Selection for On-Call Archaeological Investigations

The background of the slide features a large, faint, circular seal of the Arkansas State Highway Commission. The seal contains the text "ARKANSAS STATE HIGHWAY COMMISSION" around the perimeter and "ARKANSAS" in the center, with a star below it. The seal is centered behind the main text.

Item 7

Consultant Selection for Highway 440 (Northbelt) Toll Feasibility Study

The background of the slide features a large, faint watermark of the Arkansas State Highway Seal. The seal is circular and contains the text "ARKANSAS STATE HIGHWAY" around the top edge and "ARKANSAS" in the center. It also includes a central emblem with a star and the words "STATE REVENUE" and "MISSISSIPPI".

Item 8

**Consultant Selection for
Future I-555 Access Road
from Payneway to
Marked Tree**

The background of the slide features a large, faint, circular seal of the Arkansas State Highway Department. The seal contains the text "ARKANSAS STATE HIGHWAY" around the top and "DEPARTMENT OF TRANSPORTATION" around the bottom. In the center of the seal is a smaller emblem with a star and the word "ARKANSAS".

Item 9

**Consultant Selection for
Development of Phase II of
Arkansas Statewide Travel
Demand Model**

The background features a large, faint, circular seal of the Arkansas State Highway Commission. The seal contains the text "ARKANSAS STATE HIGHWAY COMMISSION" around the perimeter and "SEAL" at the bottom. In the center is the state seal of Arkansas, which includes a shield with a plow, a sheaf of wheat, and a cotton plant, topped with a star and the word "ARKANSAS".

Item 10
**Local Utility Issues
on Highway Projects**

Local Utility Issues on Highway Projects

- State Law (ACA 27-67-304) allows utilities within highway right of way
- Permit required to locate utilities within highway right of way
- If highway improvement requires utilities within existing right of way to be relocated, no reimbursement is provided

Current AHTD Projects Affected by Small Utilities

AHTD Job #	Utility Name	Customer Base	Total Estimated Cost	Estimated Reimbursable %	Non-reimbursable Cost
050230	Mammoth Spring Water	1,487	\$224,000.00	20.00%	\$179,200.00
070280	Quinn Water Association	744	\$680,416.00	28.97%	\$483,299.00
070281	Quinn Water Association	744	\$220,972.00	59.03%	\$90,532.00
	Calion Waterworks	498	\$608,725.00	13.55%	\$526,242.00
070282	Calion Waterworks	498	\$315,250.00	15.00%	\$267,962.00
080391	Bee Branch Water	3,002	\$951,748.06	75.61%	\$232,131.00
	TOTAL				\$1,779,366.00

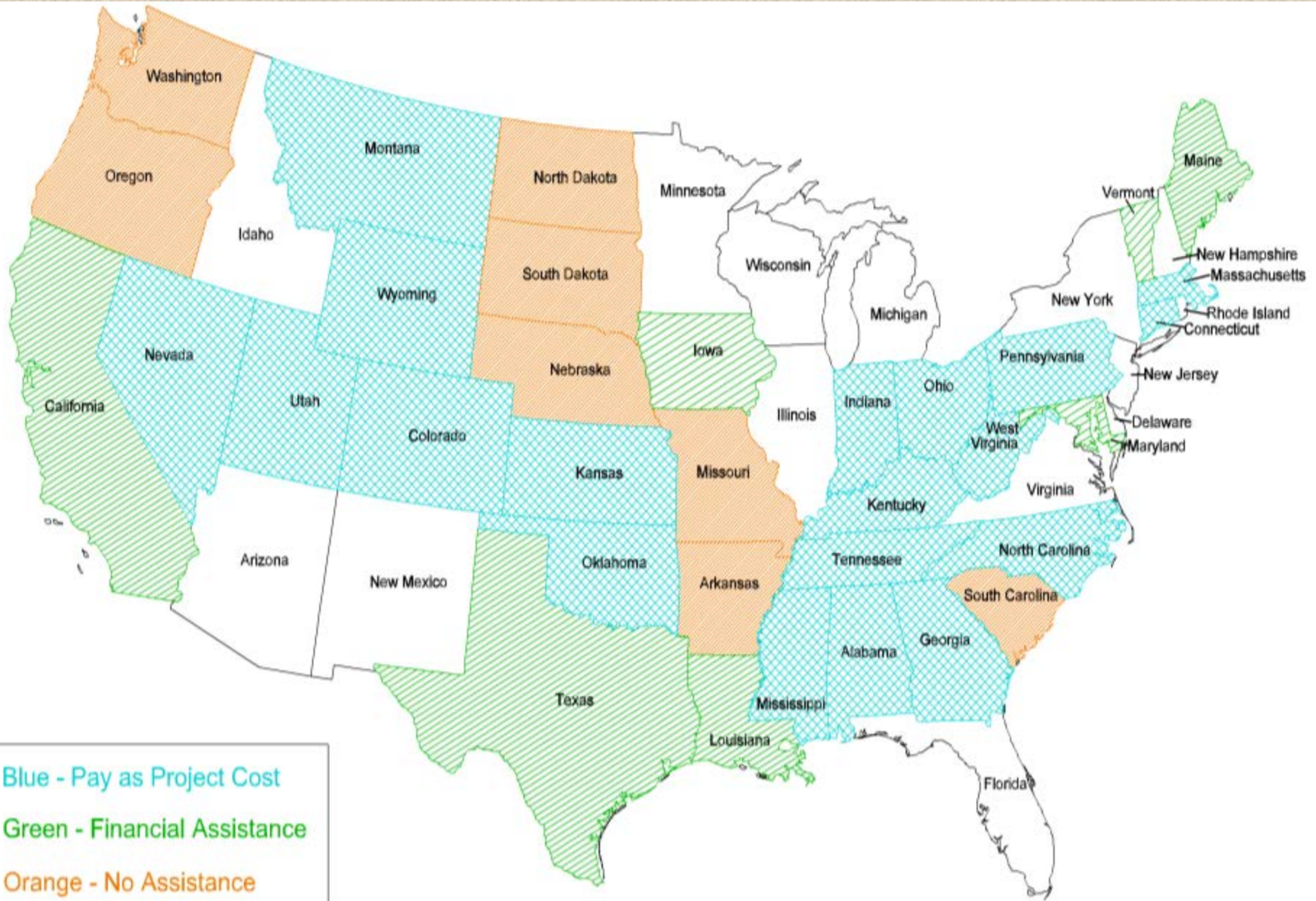
Job 050230 Hwy. 9-So. of Hwy. 342 (Mammoth Spring) (S), Highway 63, Fulton County

Job 070280 El Dorado-Hwy. 335 (S), Highway 167, Union County

Job 070281 Hwy. 335-Ouachita River (S), Highway 167, Union County

Job 070282 Ouachita River Str. & Apprs. (S), Highway 167, Union/Calhoun Counties

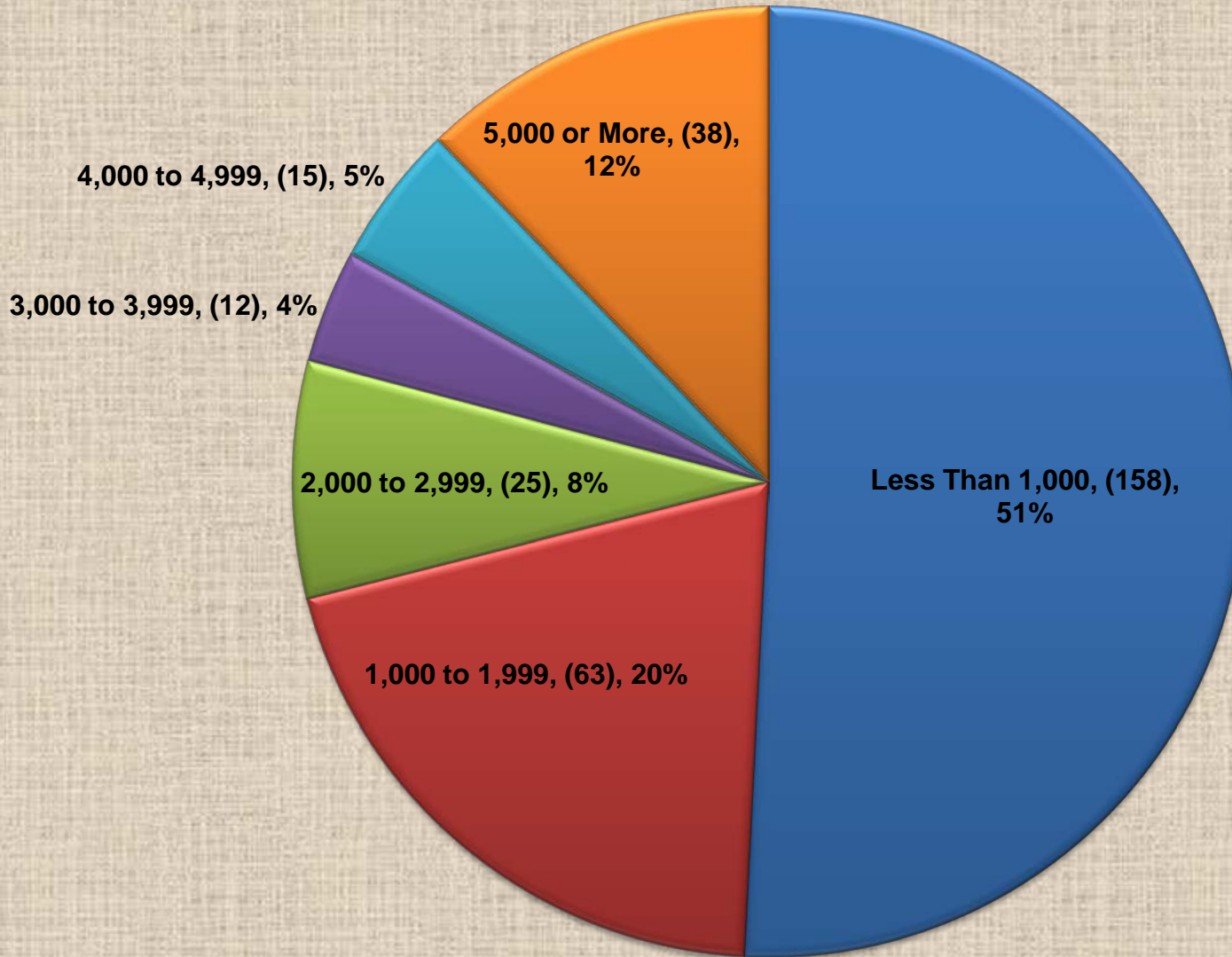
Job 080391 N. of Bee Branch-Co. Rd. 28 (S), Highway 65, Van Buren County



Blue - Pay as Project Cost
Green - Financial Assistance
Orange - No Assistance

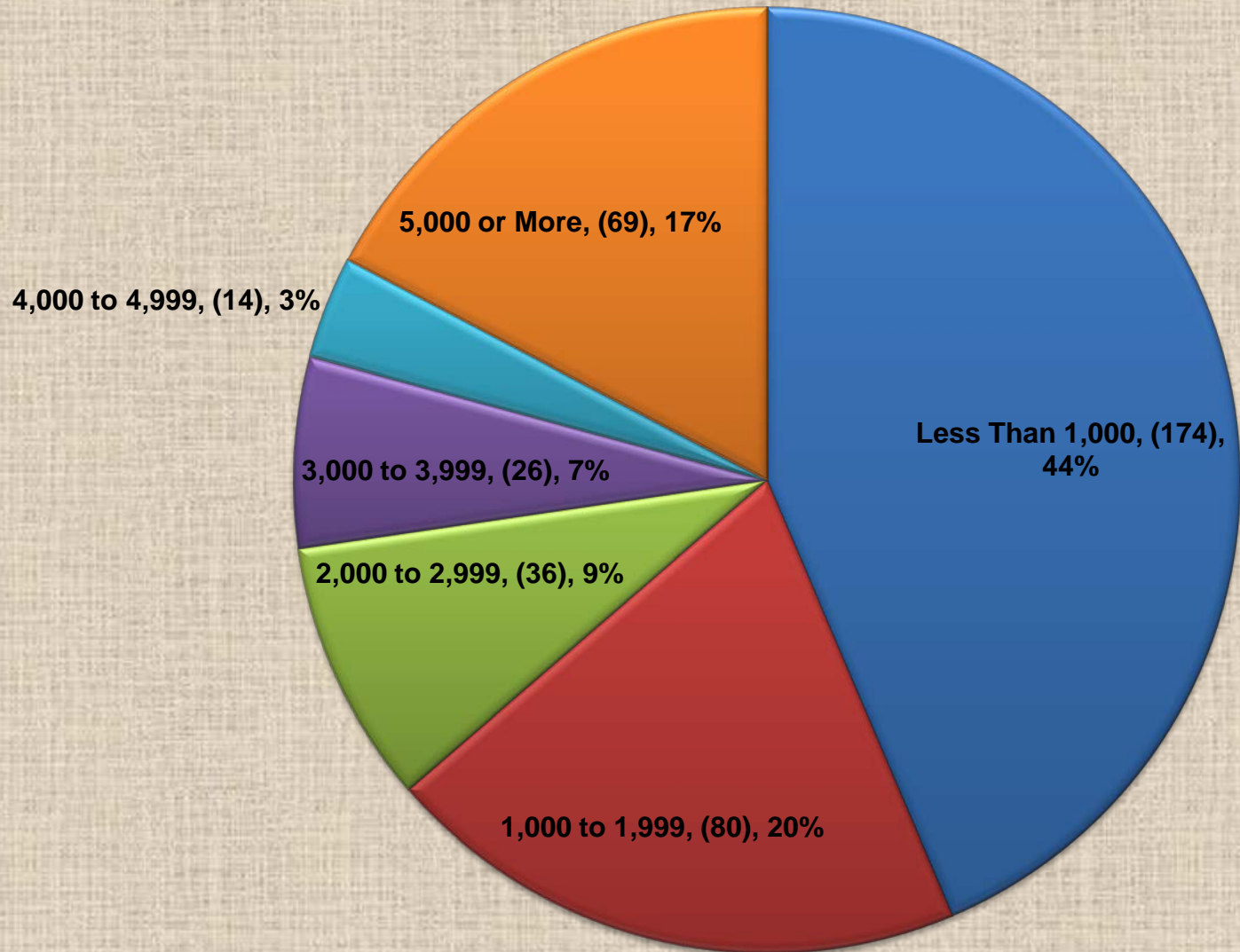
Non-Profit Water Association Customer Base

(311 Associations)



Public Works Utilities Customer Base

399 Public Works



Local Utility Issues on Highway Projects

Options

➤ Do Nothing

- Would delay/defer highway improvement projects until non-reimbursable utilities are relocated
- Would require developing “replacement” projects if utility relocation delayed beyond scheduled year

Local Utility Issues on Highway Projects

Options

➤ Pay for Non-Reimbursable Utilities

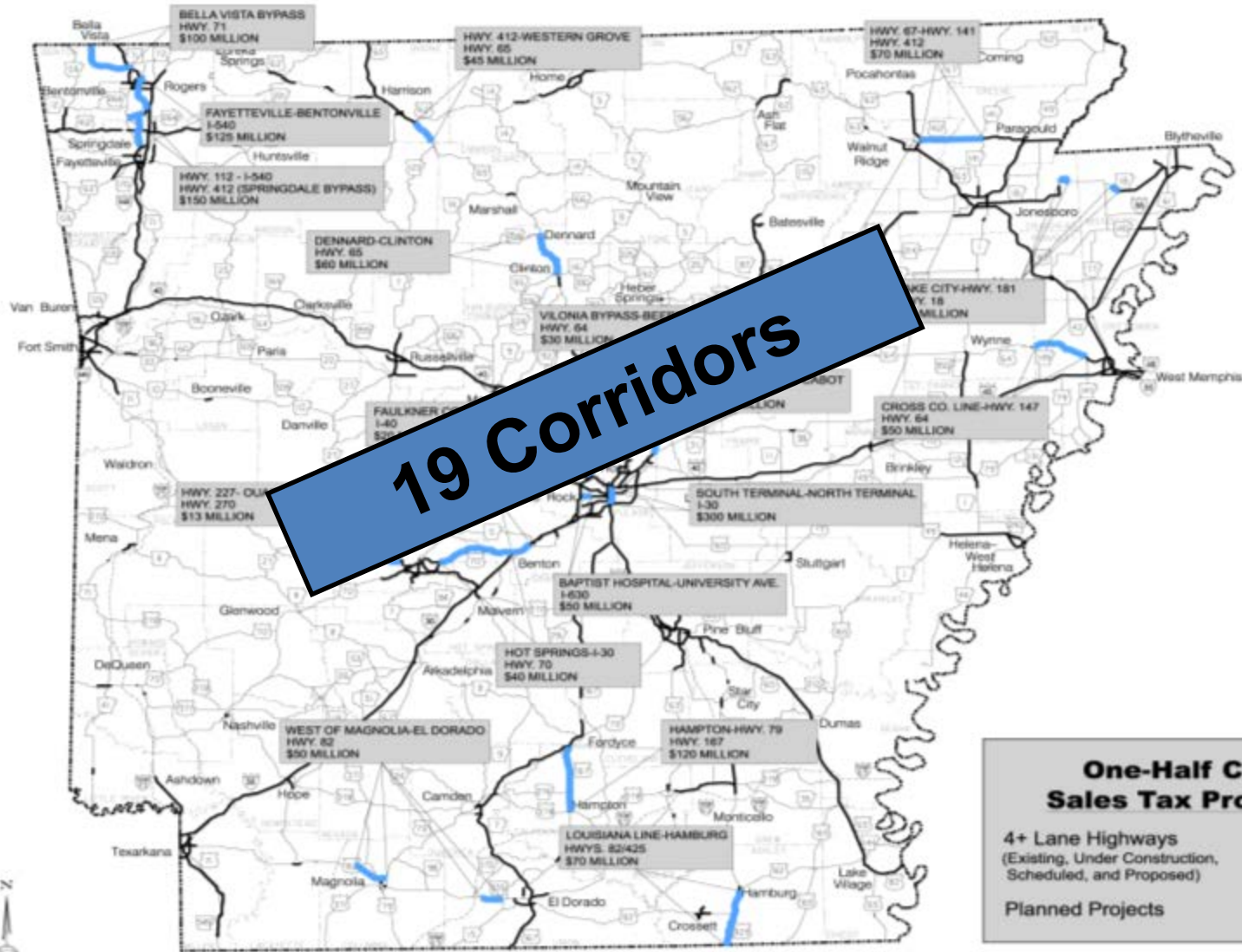
- Would result in affected project moving forward, but fewer highway improvement projects overall – estimated to cost around \$5 million annually
- Considerations:
 - Limit to projects on Four-Lane Grid System, plus Bridge Replacement and Safety projects
 - Coordinate with local area officials to see if funds could be loaned for utility relocation
 - Require highway mileage to be transferred to city and/or county
 - Commission consideration on case-by-case basis

The background of the slide features a large, faint, circular seal of the Arkansas State Highway and Transportation Commission. The seal contains the text "ARKANSAS STATE HIGHWAY" at the top and "COMMISSION" at the bottom, with "SEAL OF ARKANSAS" on the left and "OF ARKANSAS" on the right. In the center of the seal is the state seal of Arkansas, which depicts a bear holding a shield, with a plow and a sheaf of wheat on either side, and a star above. The text "1820" is also visible within the seal.

Item 11

Update on Temporary 0.5% Sales Tax Program Projects

Half-Cent Sales Tax Projects

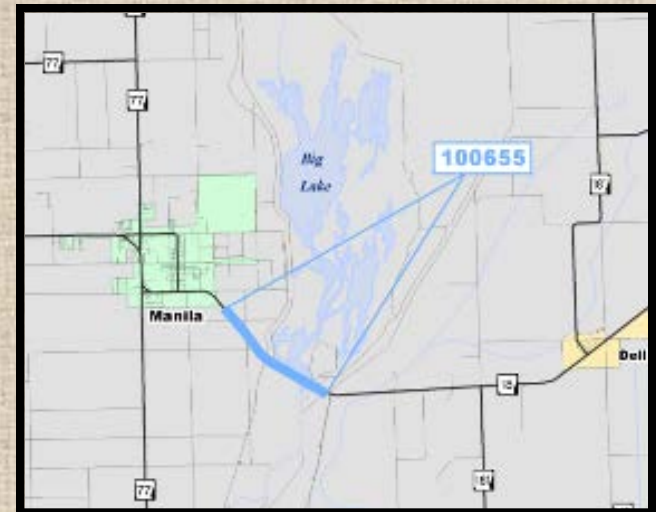


Highway 18 – Lake City to Highway 181

Job 100652 – Monette Bypass (Bs. & Surf.)

Job 100655 – Manila-East

- \$60 Million
- Project Status – Monette Bypass (Bs. & Surf.)
 - Contingent on Completion of the Grading and Structures (Scheduled for 2014)
- Project Status – Manila-East
 - Environmental – 90%
 - Survey – 100%
 - Design – 50%
 - ROW and Utilities – 10% and 20%
- Possible Issues
 - Coordination with US Fish and Wildlife Service for ROW in Big Lake National Wildlife Refuge





E Lake St

Manila

Baltimore Ave

Arkansas 18, Manila, AR

77

Hog Island

Big Lake National Wildlife Refuge

Oak Island

Big Island

Big Lake

Job 100655

© 2012 Google

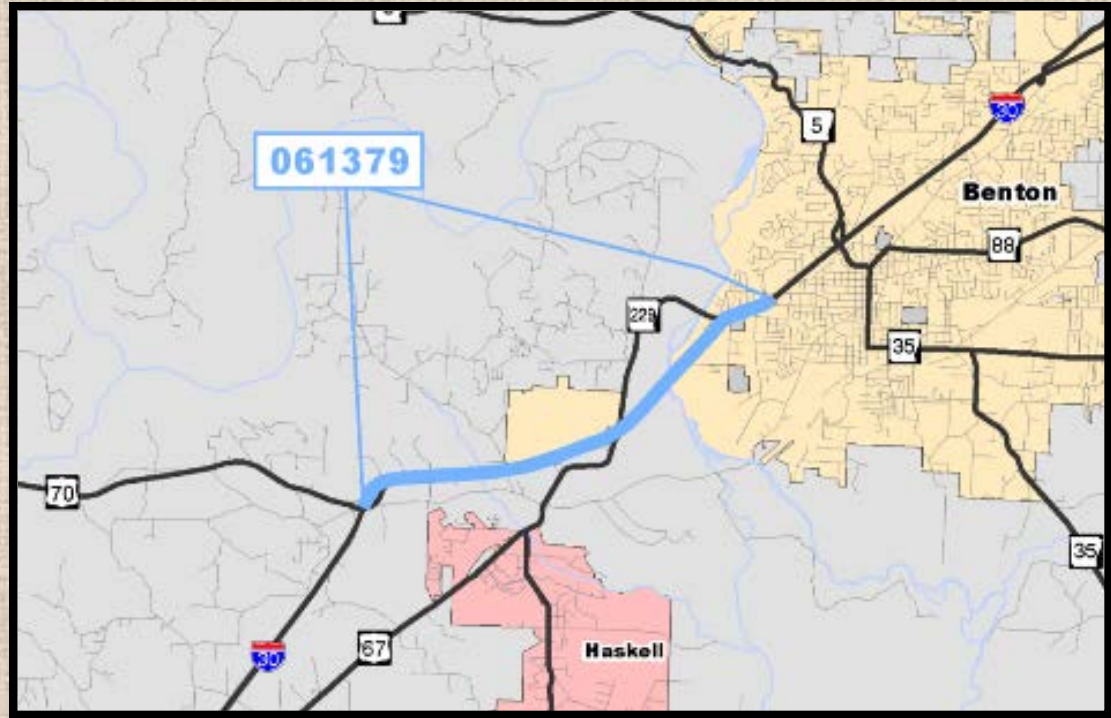
DIST	CHTY	HYE	SECT	RR	OF	D	L	M	TAPE
10	047	018	060	01	23	3	1	1	7135
4.328	4.325	77.1	07/12/19						27638

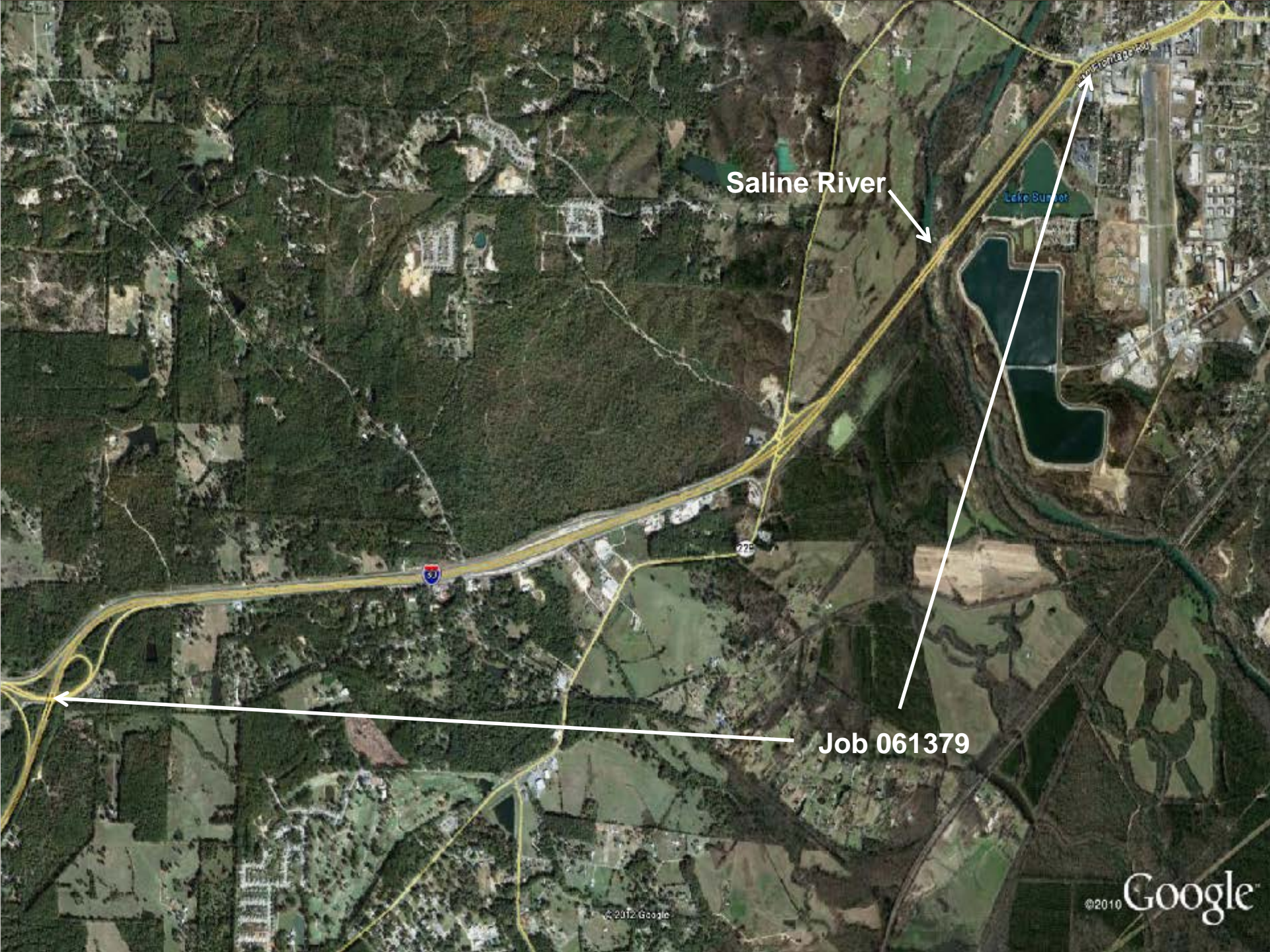


Interstate 30 – Hwy. 70 to Sevier Street

Job 061379 – Hwy. 70-Sevier St.

- \$75 Million
- Project Status
 - Environmental – 5%
 - Survey – 10%
 - Design – 0%
 - ROW and Utilities – 0%
- Possible Issues
 - Endangered or Threatened Species/Critical Habitat – Arkansas Fatmucket Mussel, Rabbitsfoot Mussel
 - Other Agency Coordination





Saline River

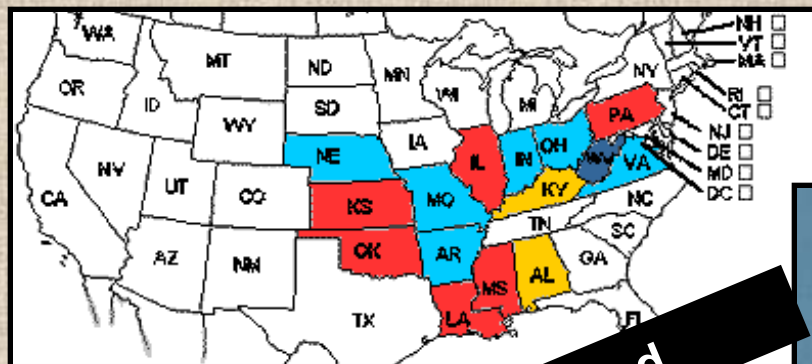
Lake Summit

Heritage Rd

3

225

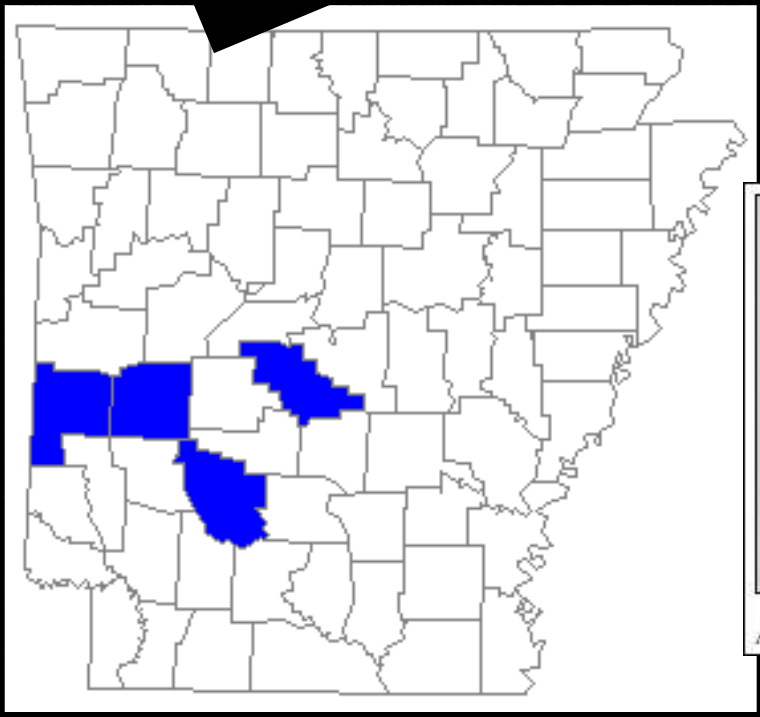
Job 061379



Rabbitsfoot Mussel



Endangered / Threatened



Arkansas Fatmucket Mussel



Arkansas Fatmucket

Photo: John L. Harris

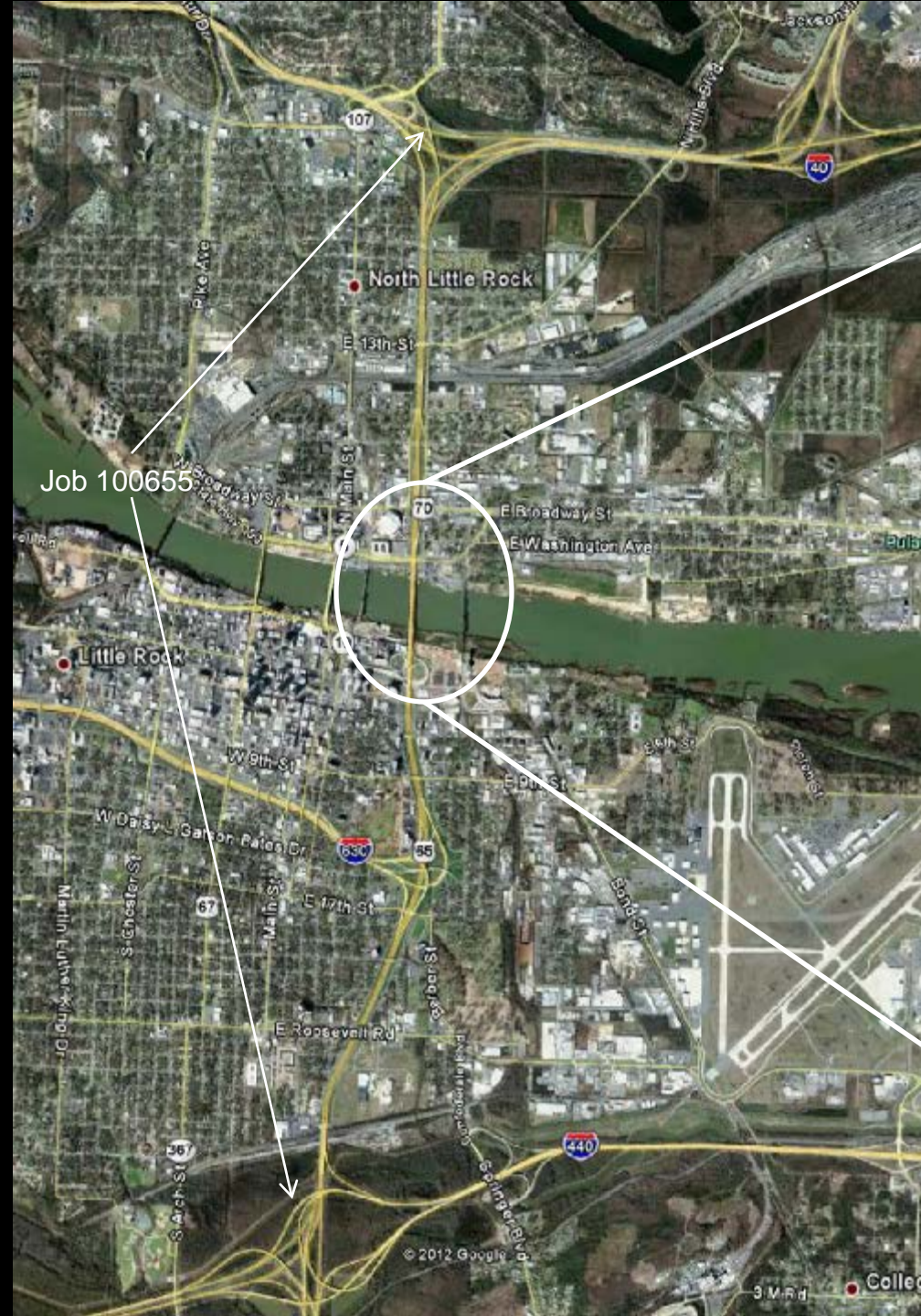


Interstate 30 – South Terminal to North Terminal

Job 061378 – South Terminal-North Terminal

- \$300 Million
- Project Status
 - Environmental – 5%
 - Survey – 5%
 - Design – 0%
 - ROW and Utilities – 0%
- Possible Issues
 - Complex Design and ROW
 - Coordination with Multiple Agencies
 - Noise Analysis

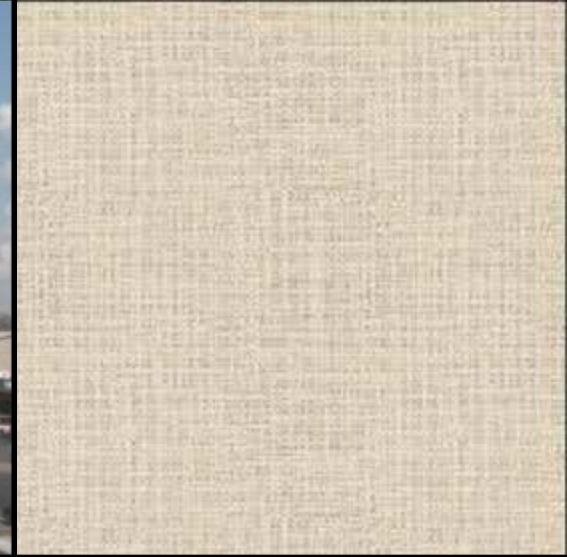






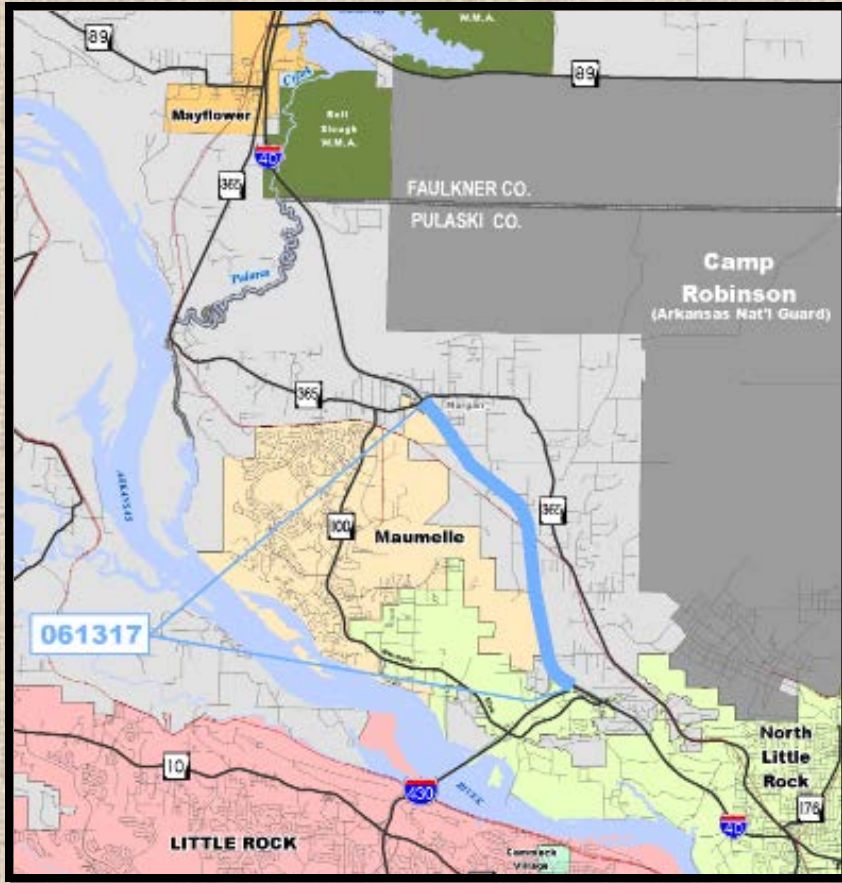






Interstate 40 – Faulkner Co. Line - East

Job 061317 – Hwy. 365-I-430 (Widening)



- \$20 Million
- Project Status
 - Environmental – 5%
 - Survey – 85%
 - Design – 0%
 - ROW and Utilities – 0%
- Possible Issues
 - Coordination with I-40/I-430 Interchange Modifications
 - Coordination with the City of Maumelle concerning their Proposed Interchange
 - Railroad Involvement

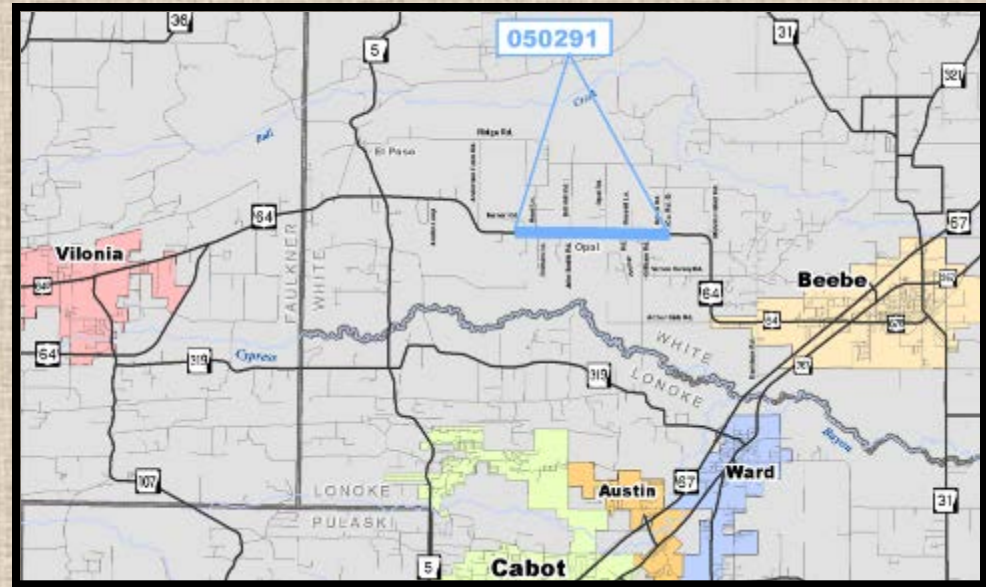
Palarm Creek-West, Palarm Creek-Hwy. 365, and I-40/I-430 Interchange Modifications are in the 2013-2016 STIP



Highway 64 – Vilonia Bypass to Beebe

Job 050291– Turner Rd.-Co. Rd. 5 (Widening)

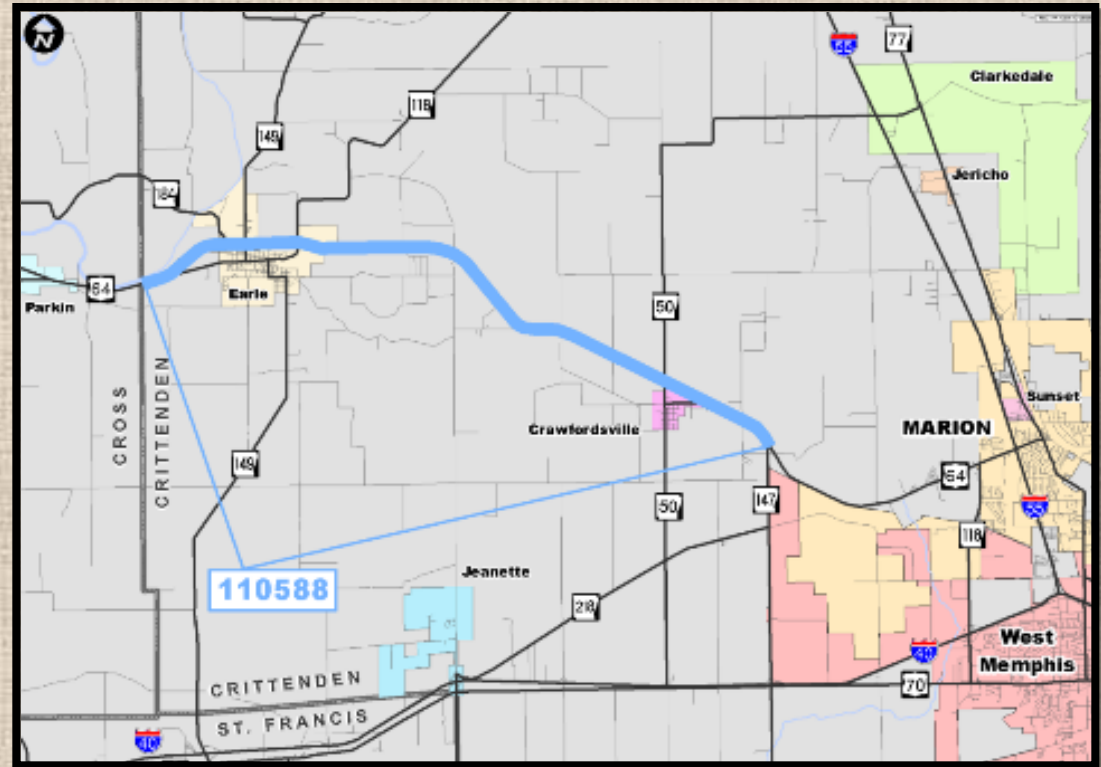
- \$30 Million
- Project Status
 - Environmental – 5%
 - Survey – 100%
 - Design – 0%
 - ROW and Utilities – 0%
- Possible Issues
 - Small Utilities Ability to Relocate in a Timely Manner



Highway 64 – Cross Co. Line to Highway 147

Job 110588 – Cross Co. Line-Hwy. 147

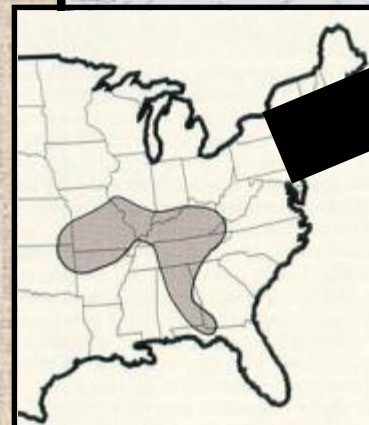
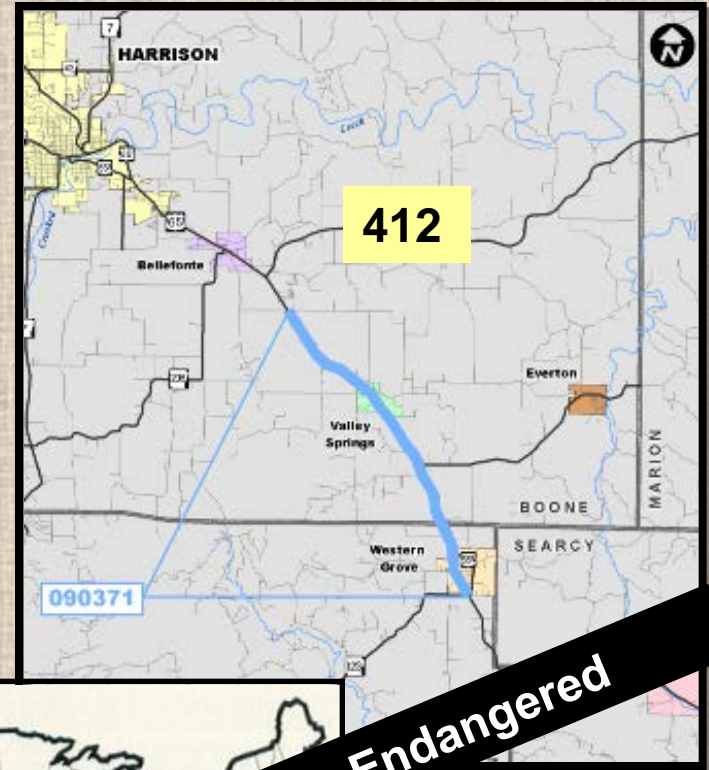
- \$50 Million
- Project Status
 - Environmental – 5%
 - Survey – 20%
 - Design – 0%
 - ROW and Utilities – 0%
- Possible Issues
 - Small Utilities Ability to Relocate in a Timely Manner
 - Railroad Involvement



Highway 65 – Highway 412 to Western Grove

Job 090371 – Maxie Camp Rd.-Hwy. 123

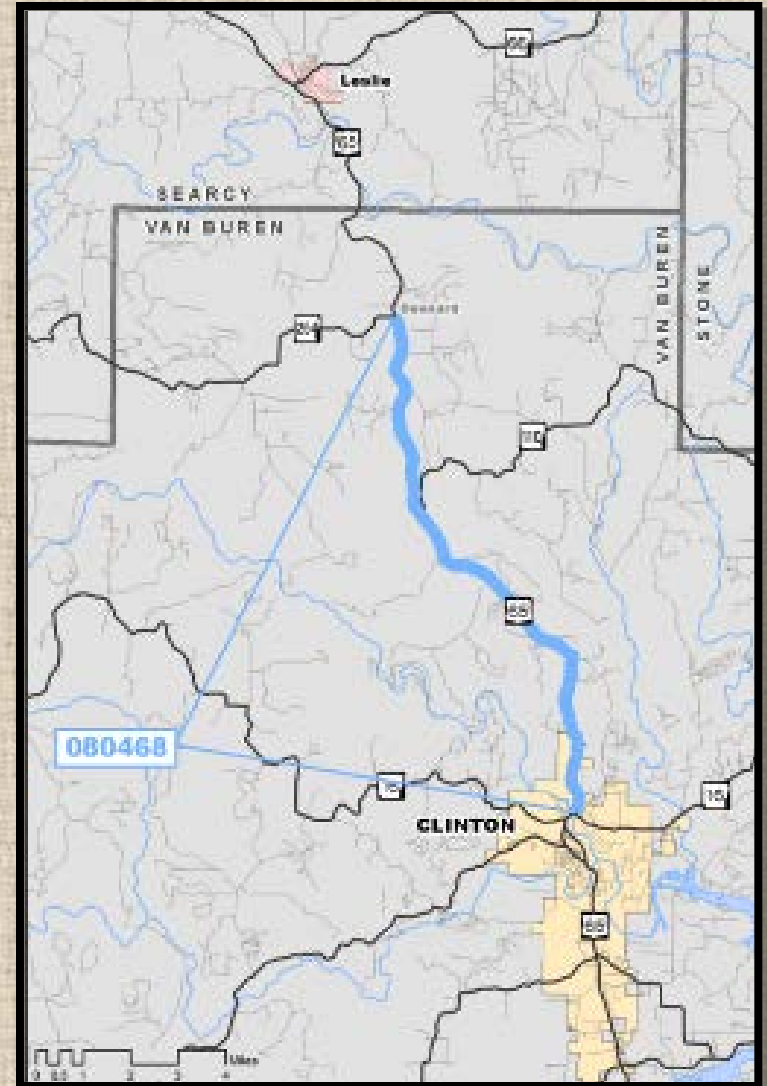
- \$45 Million
- Project Status
 - Environmental – 5%
 - Survey – 10%
 - Design – 0%
 - ROW and Utilities – 0%
- Possible Issues
 - Endangered Species/Critical Habitat – Gray Bat
 - Other Agency Coordination
 - Small Utilities Ability to Relocate in a Timely Manner



Highway 65 – Dennard to Clinton

Job 080468 – Dennard-Clinton

- \$60 Million
- Project Status
 - Environmental – 5%
 - Survey – 15%
 - Design – 0%
 - ROW and Utilities – 0%
- Possible Issues
 - Small Utilities Ability to Relocate in a Timely Manner

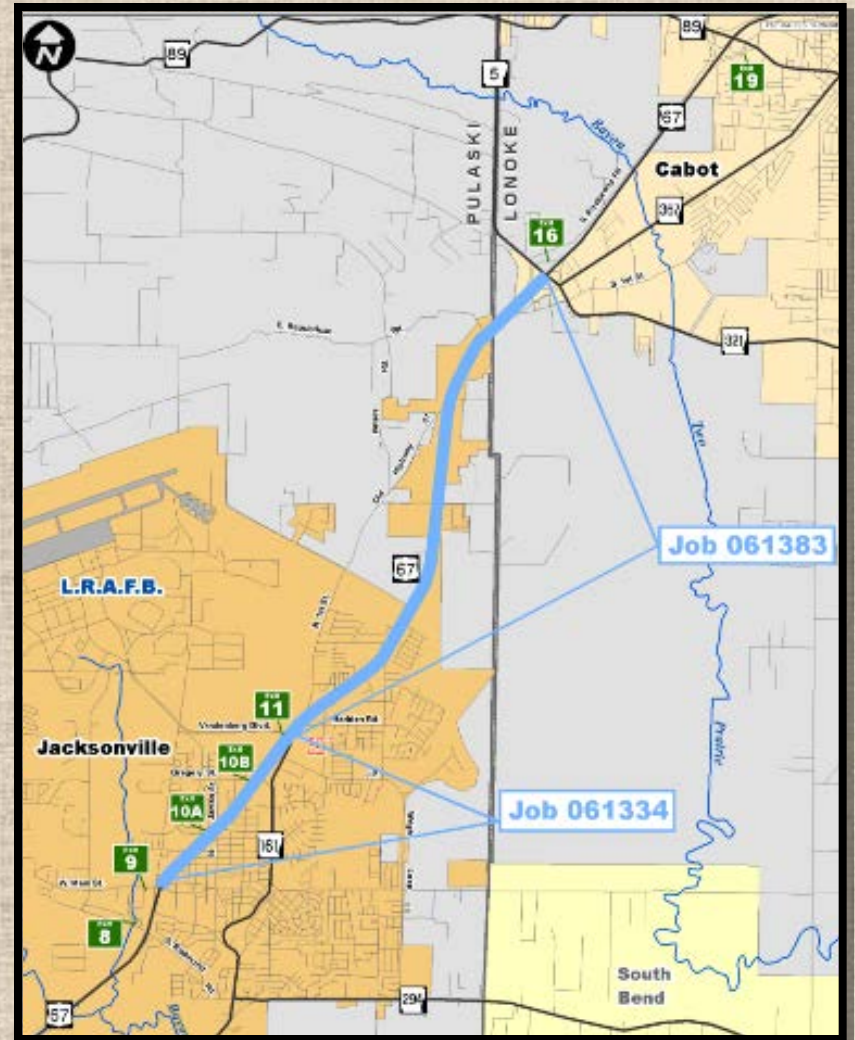


Highway 67 – Jacksonville to Cabot

Job 061334 – Main St.-Vandenberg Blvd.

Job 061383 – Vandenberg Blvd.-Hwy. 5

- \$120 Million
- Project Status
 - Study – 90%
 - Environmental – 5%
 - Survey – 50%
 - Design – 0%
 - ROW and Utilities – 0%
- Possible Issues
 - Complex Design and ROW
 - Noise Analysis





Sam Marten Co

Pensacola Dr

67



Dolan St

Dolan Madison Dr

67

Whispering

Whispering

© 2012 Google

© 2010 Google



John Martin Dr

T.P. White Dr

Ramada

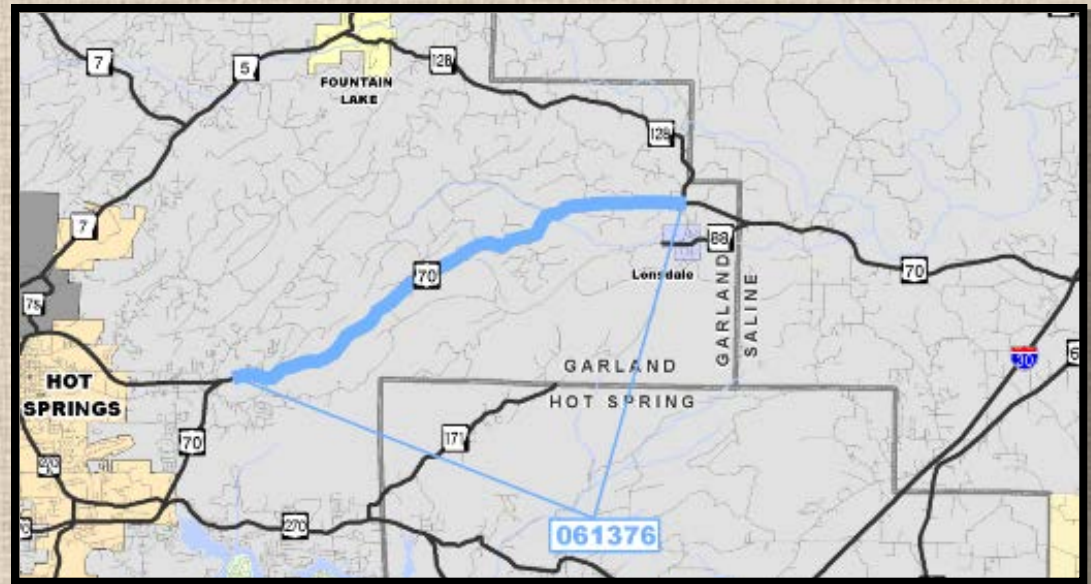
57

Crawfish

Highway 70 – Hot Springs to I-30

Job 061376 – Hot Springs-Hwy. 128

- \$40 Million
- Project Status
 - Environmental – 5%
 - Survey – 20%
 - Design – 0%
 - ROW and Utilities – 0%
- Possible Issues
 - Small Utilities Ability to Relocate in a Timely Manner



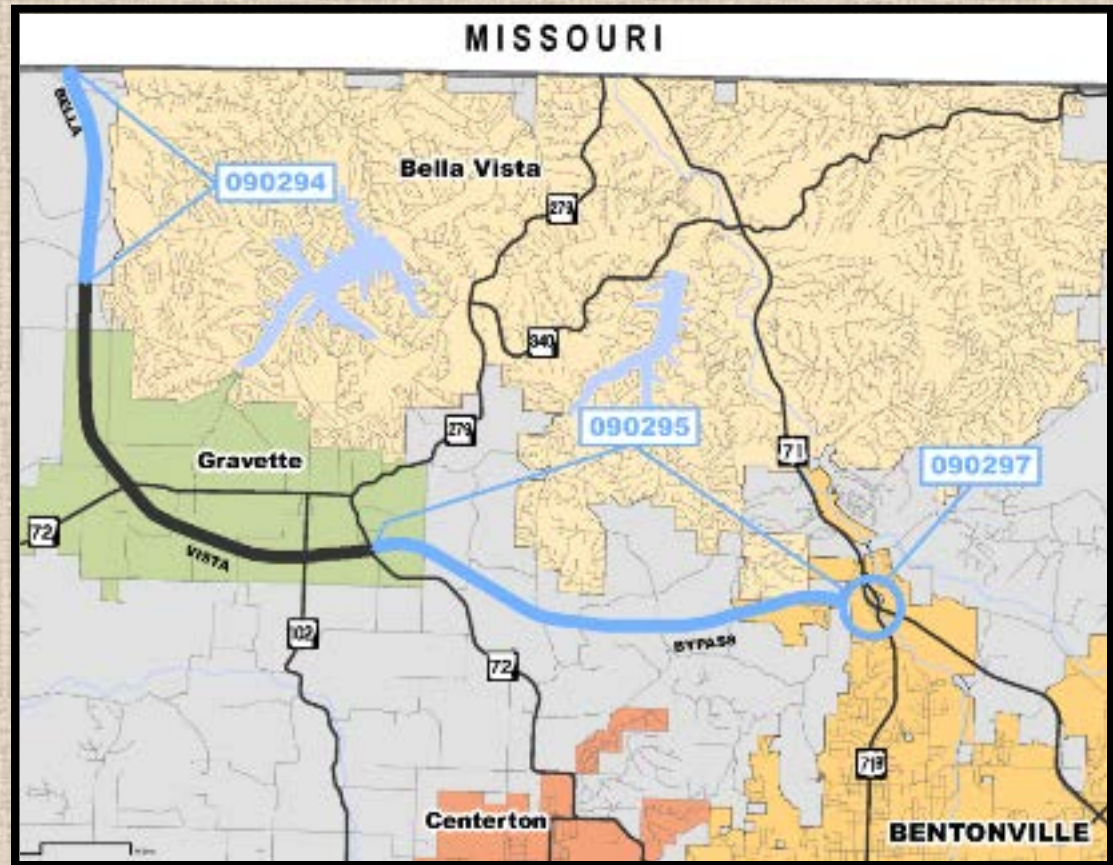
Highway 71 - Bella Vista Bypass

Job 090294 – Co. Rd. 34-Mo. St. Line (B.V. Bypass)

Job 090295 – Hwy. 71-Hwy. 72 South (Bella Vista Bypass)

Job 090297 – Hwy. 71 Interchange (B.V. Bypass)

- \$100 Million
- Project Status
 - Environmental – 85%
 - Survey – 100%
 - Design – 50%
 - ROW and Utilities – 95% and 55%
- Possible Issues
 - Two Archeological Sites Require Evaluation
 - Coordination with Missouri DOT

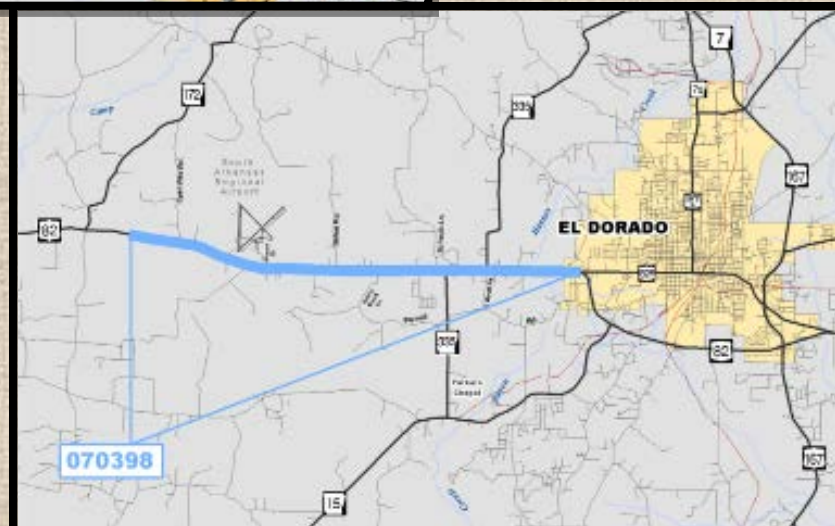
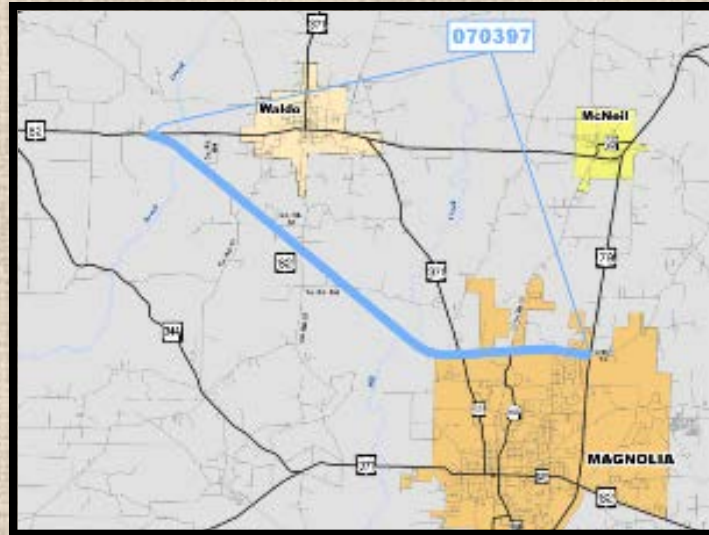


Highway 82 – West of Magnolia to El Dorado

Job 070397 – Hwy. 98-Hwy. 79 (Widening)

Job 070398 – Hwy. 82B-West (Widening)

- \$50 Million
- Project Status
 - Environmental – 5%
 - Survey – 5%
 - Design – 0%
 - ROW and Utilities – 0%
- Possible Issues
 - Small Utilities Ability to Relocate in a Timely Manner
 - Railroad Involvement





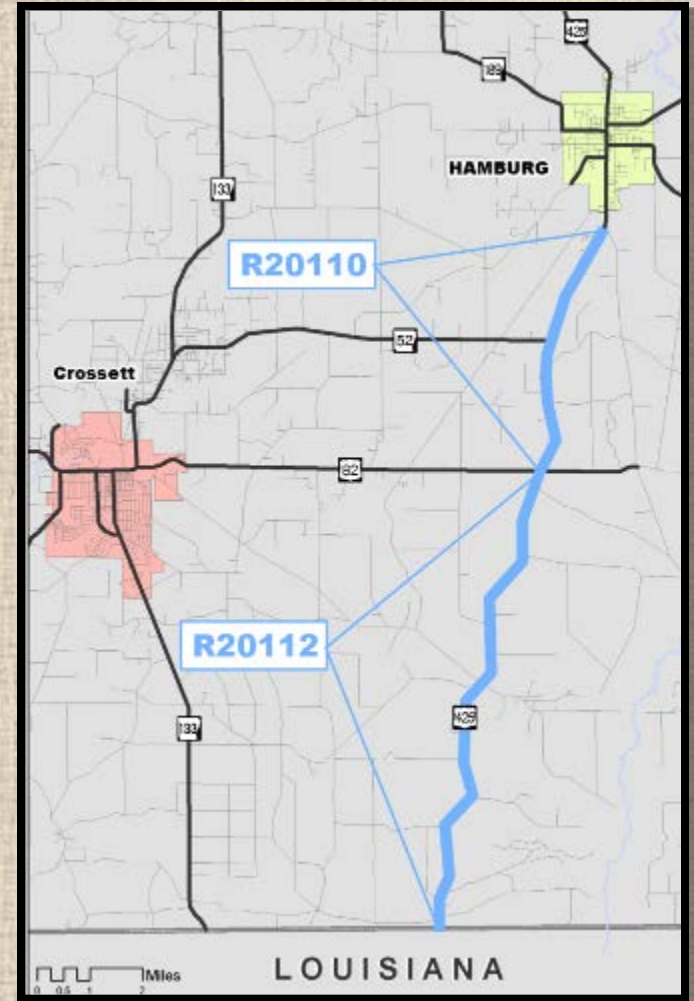


Highway 82/425 – Louisiana Line to Hamburg

Job R20112 – Louisiana State Line-Hwy. 82

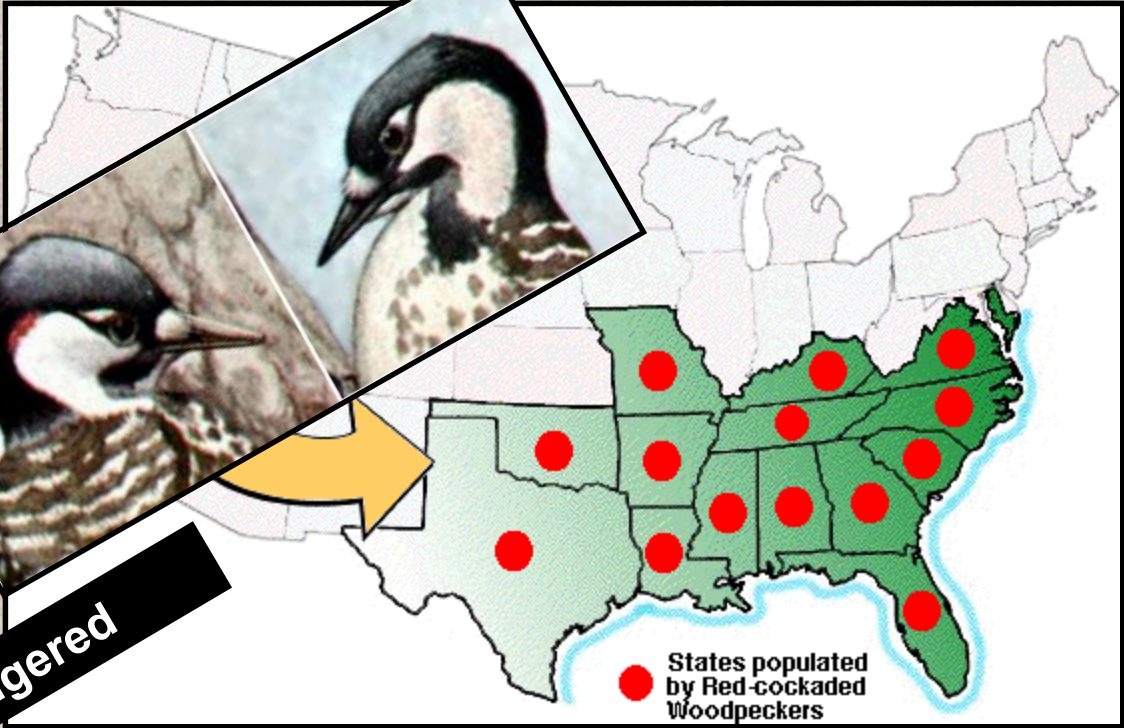
Job R20110 – Hwy. 425-Hamburg

- \$70 Million
- Project Status
 - Environmental – 5%
 - Survey – 20%
 - Design – 0%
 - ROW and Utilities – 0%
- Possible Issues
 - Small Utilities Ability to Relocate in a Timely Manner
 - Endangered Species/Critical Habitat – Red-cockaded Woodpecker





Endangered



The Red-cockaded Woodpecker roost and nest cavities are found in live shortleaf, loblolly, or other southern species of pine trees more than 60 years old.



Managed Habitat for
the Red-cockaded
Woodpecker

Highway 167 – Hampton to Hwy. 79

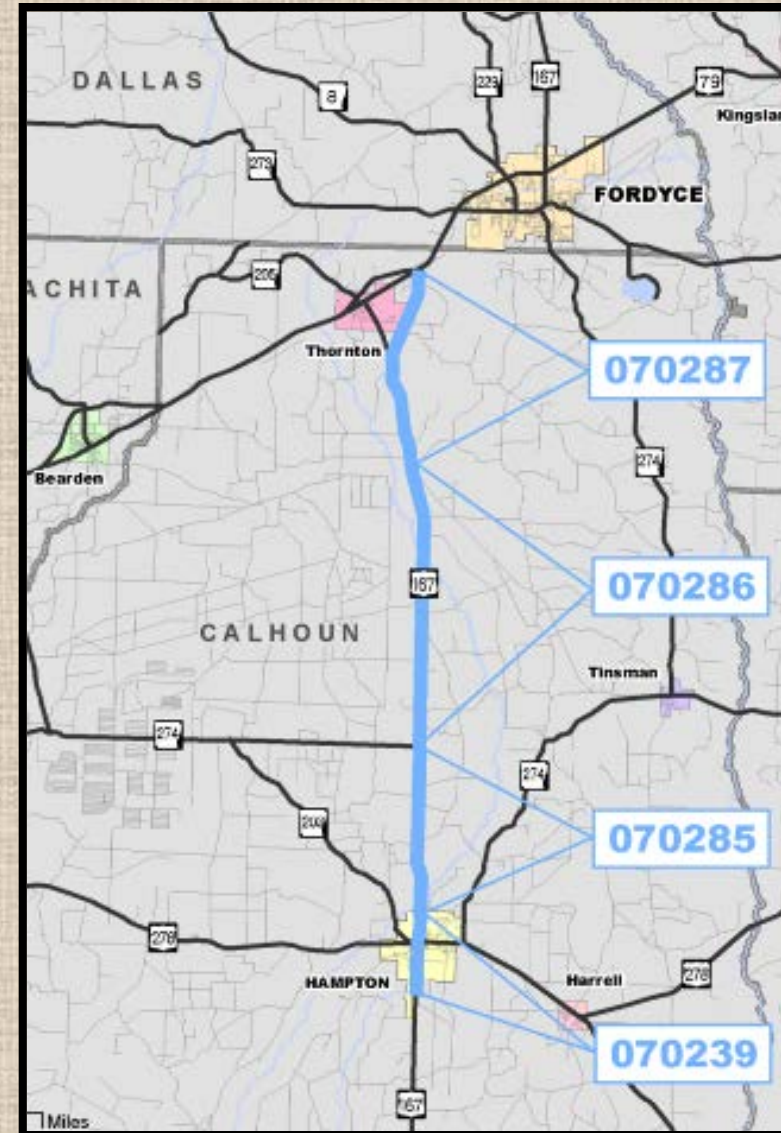
Job 070239 – Hwy. 167 Improvements (Hampton)

Job 070285 – Hampton-Hwy. 274

Job 070286 – Hwy. 274-North

Job 070287 – Hwy. 79-South

- \$120 Million
- Project Status
 - Environmental – 10%
 - Survey – 15%
 - Design – 0%
 - ROW and Utilities – 0%
- Possible Issues
 - Small Utilities Ability to Relocate in a Timely Manner
 - Relocates in Hampton





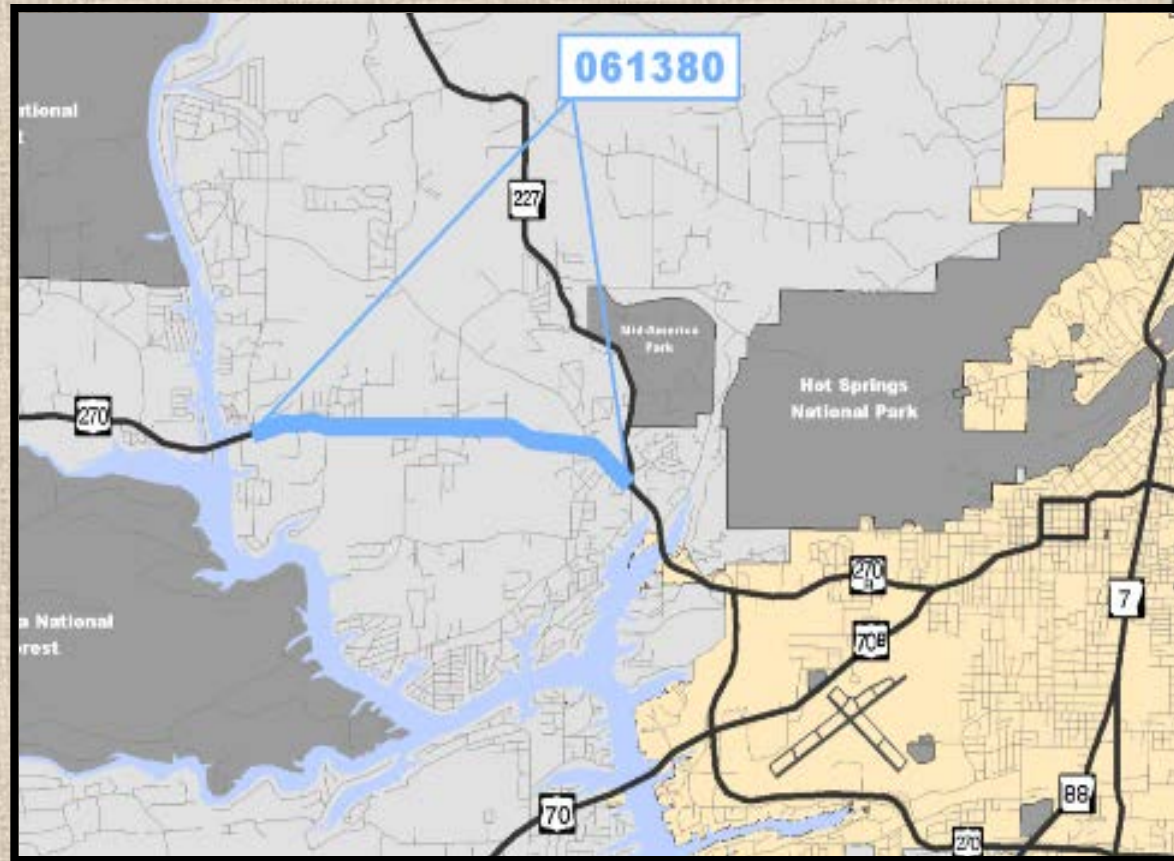
City of Hampton



Highway 270 – Highway 227 to Ouachita River

Job 061380 – Hwy. 227-Ouachita River (Widening)

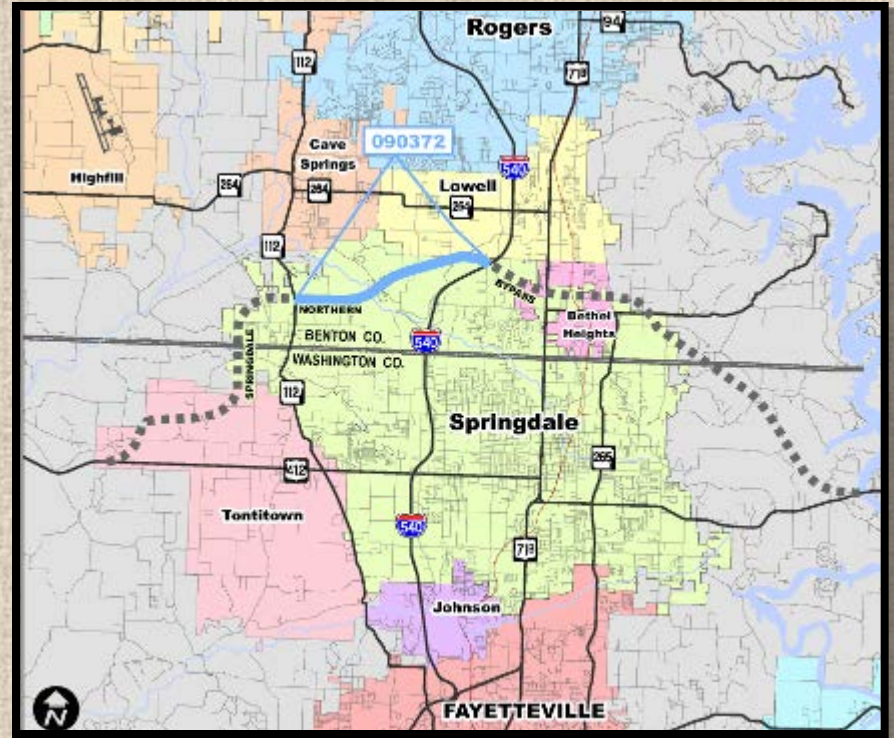
- \$13 Million
- Project Status
 - Environmental – 5%
 - Survey – 3%
 - Design – 0%
 - ROW and Utilities – 0%
- Possible Issues
 - Complex ROW





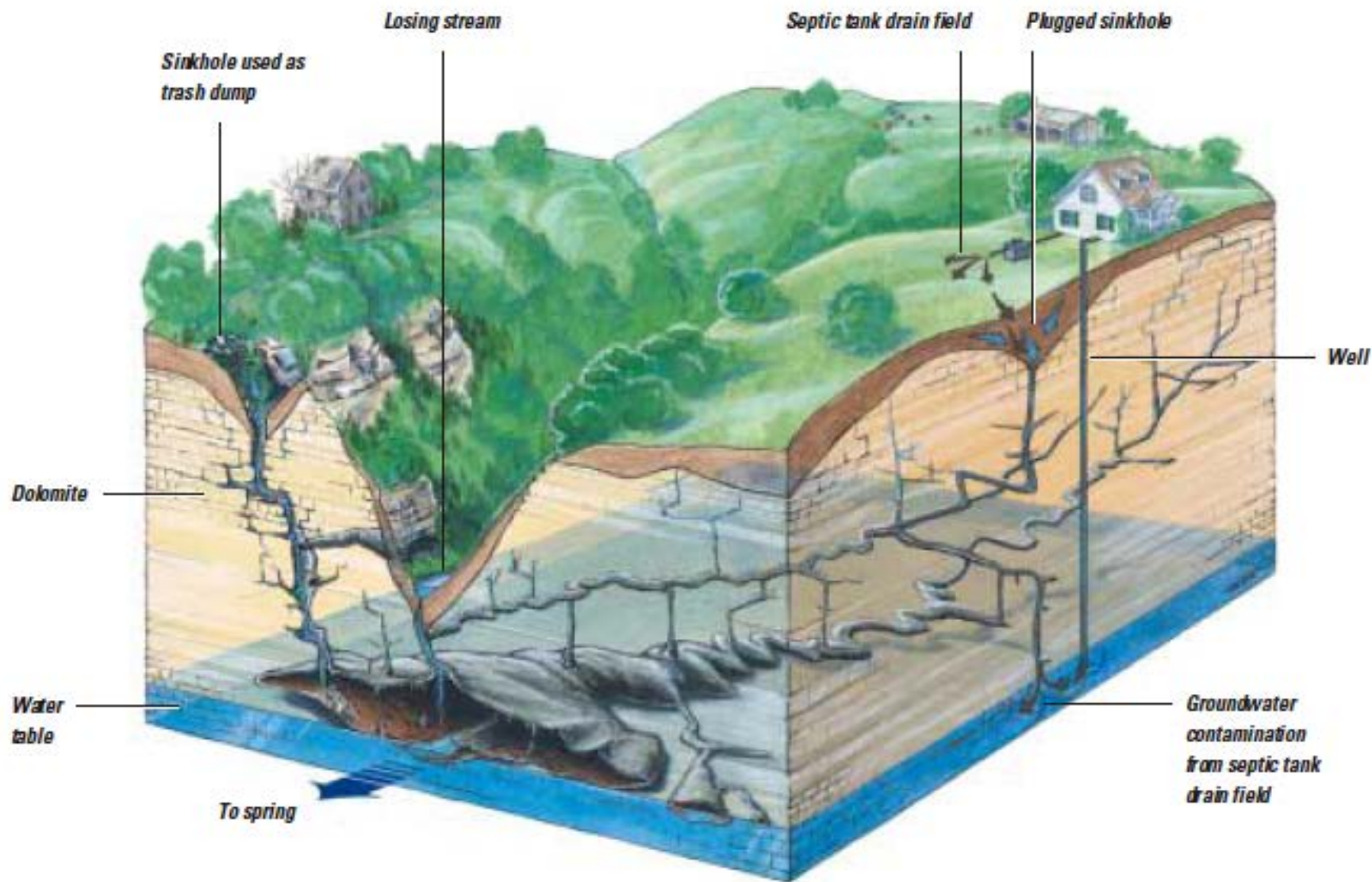
Highway 412 – Springdale Bypass

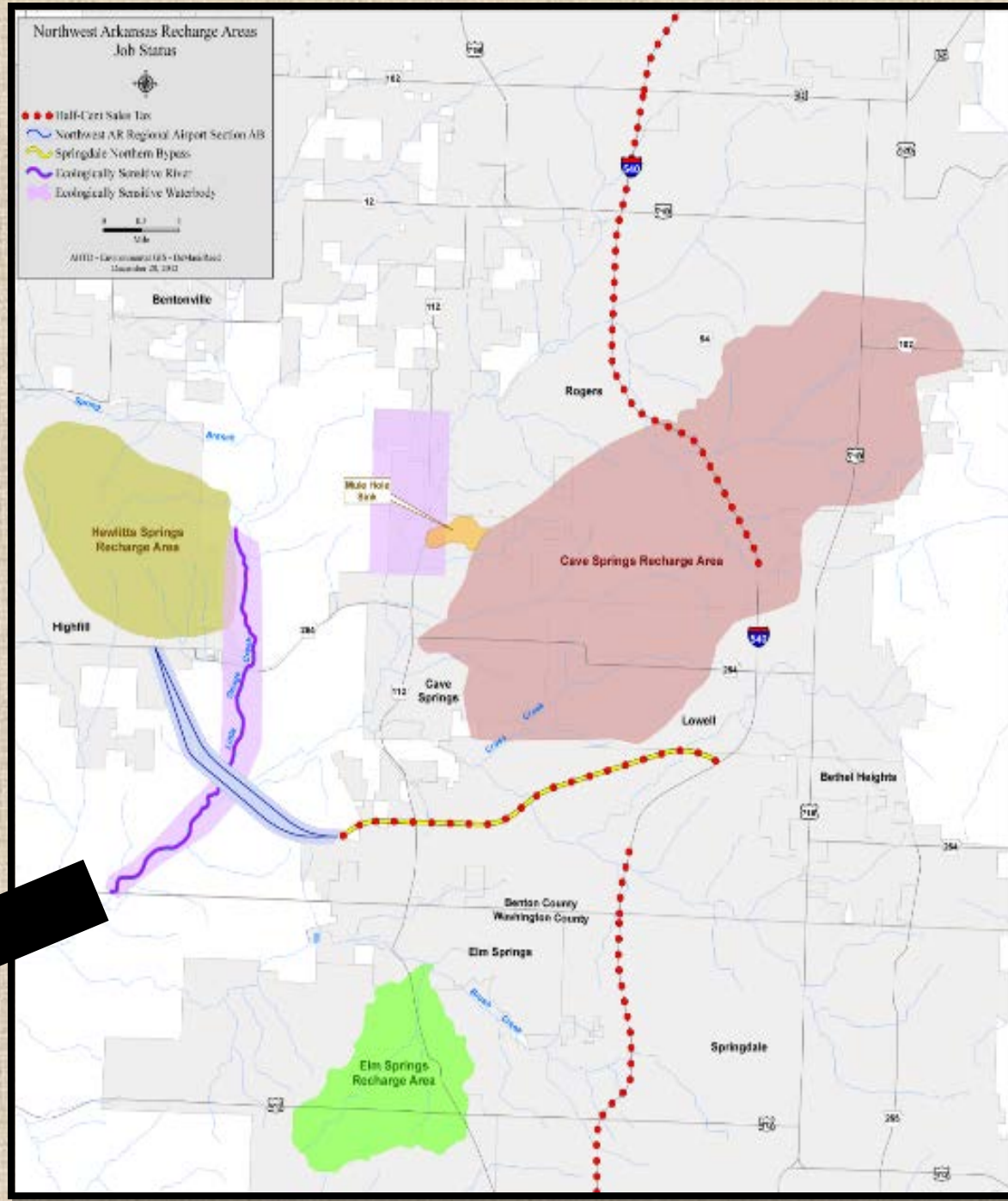
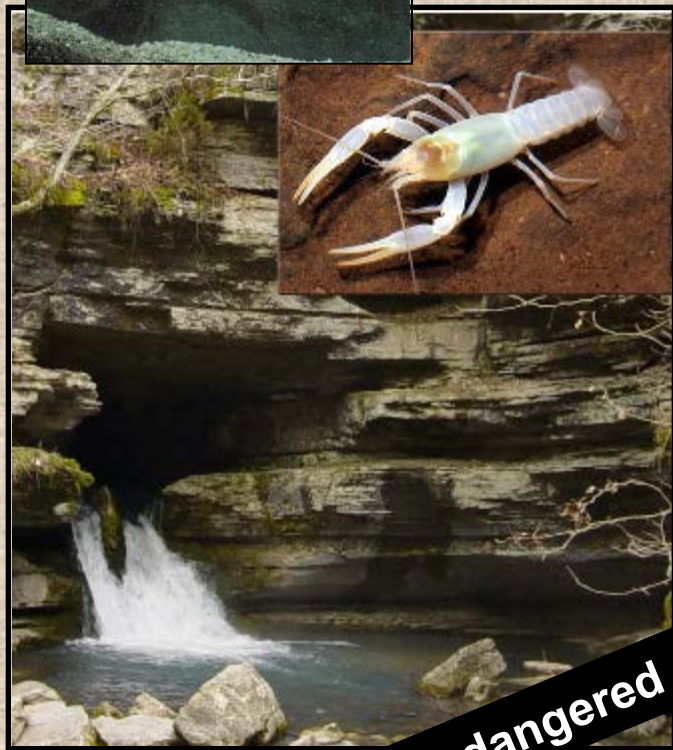
Job 090372 – Hwy. 112-I-540



- \$150 Million
- Project Status
 - Environmental – 90%
 - Survey – 100%
 - Design – 60%
 - ROW and Utilities – 30% and 30%
- Possible Issues
 - Additional Archeological Evaluation
 - Environmental Reassessment
 - Cave Springs Recharge Area
 - Endangered or Threatened Species/Habitat – Ozark Cavefish, Cave (Benton County) Crayfish

How karst systems are formed



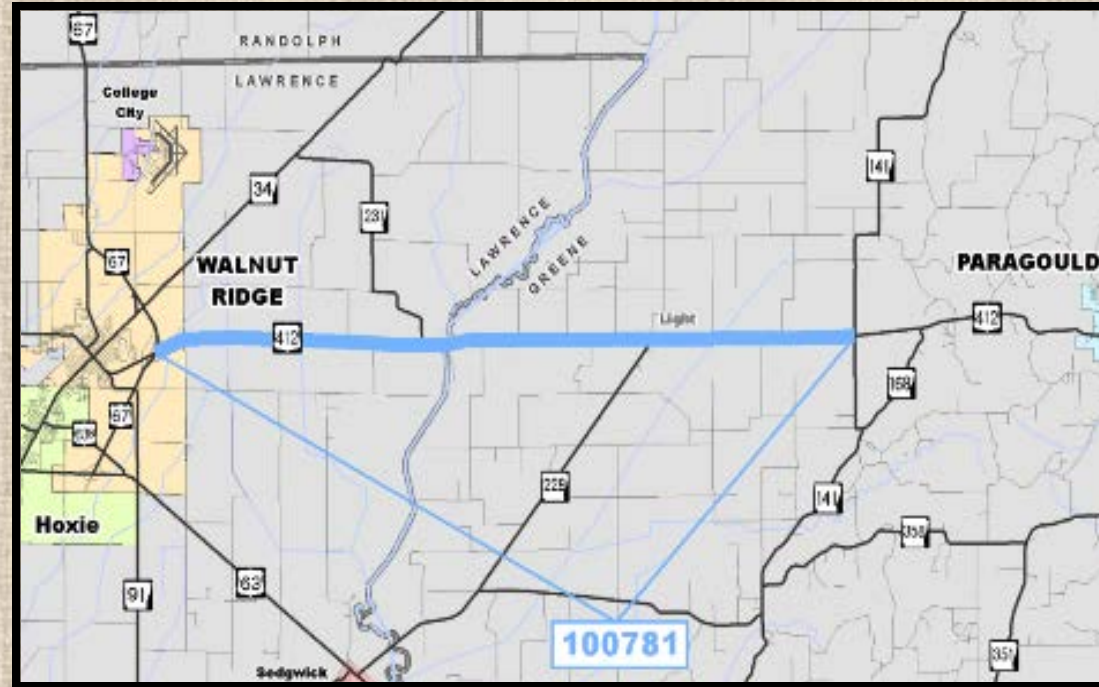


Threatened / Endangered

Highway 412 – Hwy. 67 to Hwy. 141

Job 100781 – Hwy. 67-Hwy. 141

- \$70 Million
- Project Status
 - Environmental – 5%
 - Survey – 15%
 - Design – 0%
 - ROW and Utilities – 0%
- Possible Issues
 - Impact to the Community of Light
 - Small Utilities Ability to Relocate in a Timely Manner
 - Railroad Involvement





Light, Arkansas

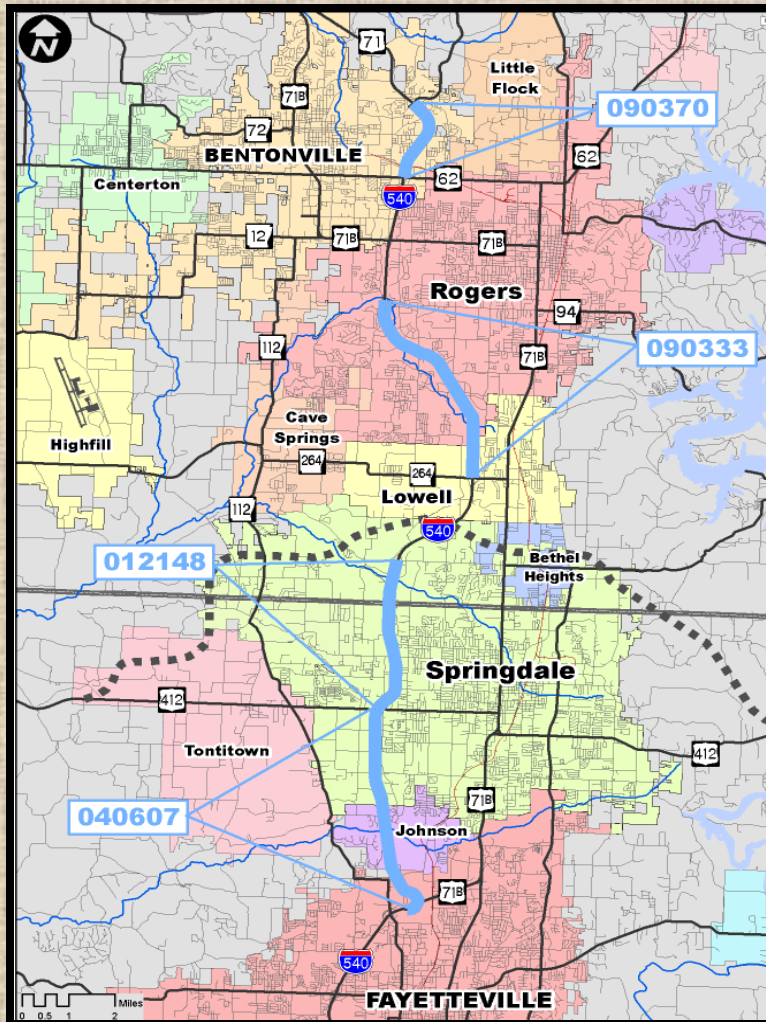
Interstate 540 – Fayetteville to Bentonville

Job 040607 – Hwy. 71B-Hwy. 412 (Widening)

Job 012148 – Hwy. 412-Wagon Wheel Rd. (Widening)

Job 090333 – Hwy. 264-New Hope Rd. (Widening)

Job 090370 – Hwy. 62/102- Hwy. 72 Widening & Intchnng. Impvts.



- \$125 Million
- Project Status
 - Environmental – 10%
 - Survey – 70%
 - Design – 5%
 - ROW and Utilities – 0%
- Possible Issues
 - Cave Springs Recharge Area
 - Endangered or Threatened Species/Habitat – Ozark Cavefish, Cave (Benton Co.) Crayfish
 - Coordination with Interchange Work
 - Railroad Involvement

Interstate 630 – Baptist Hospital to University Avenue

Job 061381 – Baptist Hospital-University Ave.

- \$50 Million

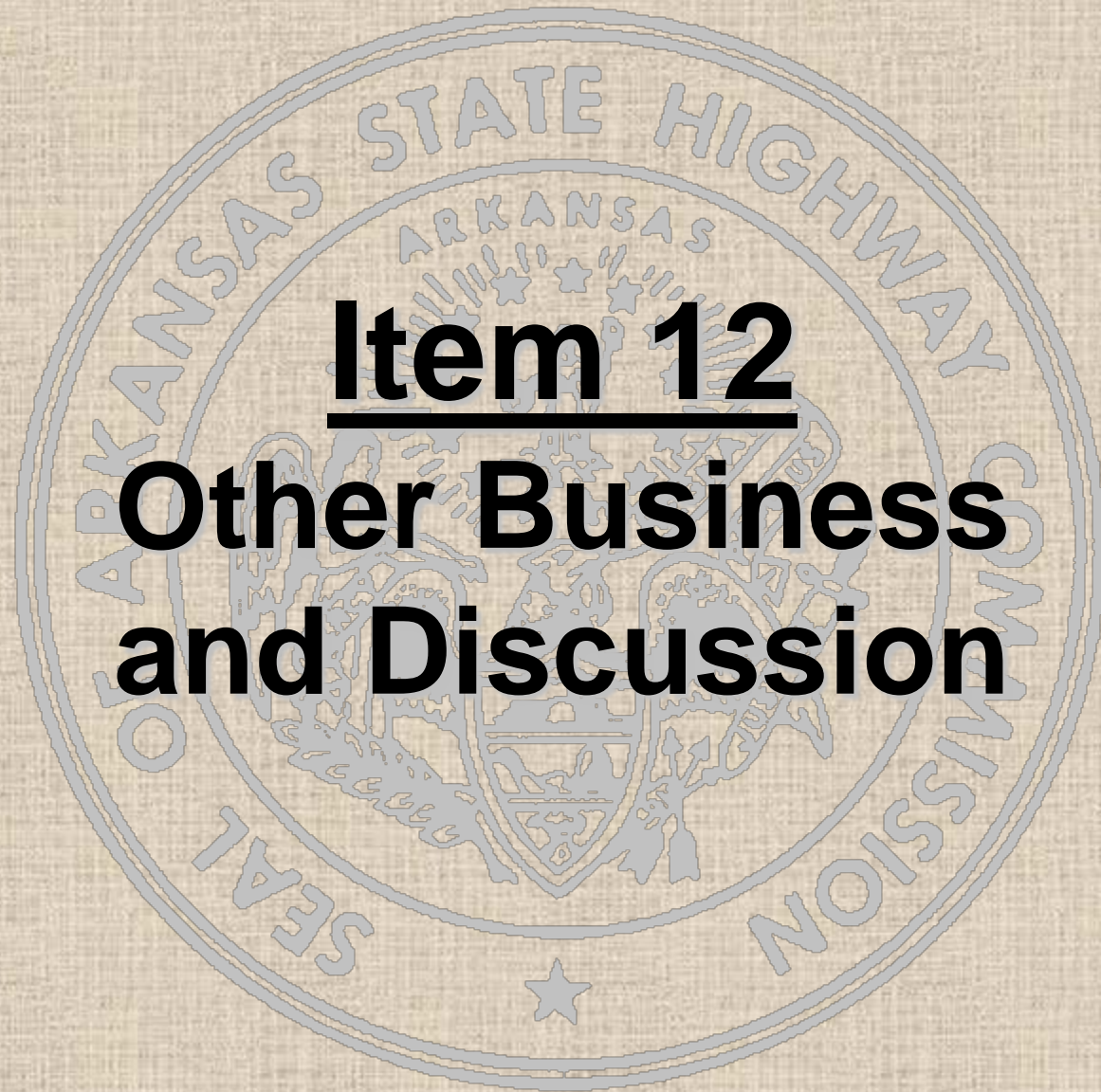
- Project Status

- Environmental – 5%
- Survey – 20%
- Design – 0%
- ROW and Utilities – 0%

- Possible Issues

- Complex Design and ROW
- Multiple Agency Coordination
- Noise Analysis





Item 12

Other Business and Discussion

